



D E S  R C



## COMPANY PROFILE

We, as **DESARC DESIGN**, present you the naturally beautiful surfaces with the most innovative design solutions.

***Dream it and have it with Desarc!***

### NATURAL STONE PRODUCTS

We have a team with an experience of more than 20 years in natural stone business and projects.

- We aim to solve the problems getting faced with during the natural stone applications; such as:
  - Poor production quality below expectations.
  - Wrong design applications occurred due to the lack of know-how.
  - Never ending delivery time.
  
- We do not only consider natural stone as a commercial commodity, but also as a piece of art and we all should respect more to what the nature gives us. Here, we present you all the beauties of nature with the magical touch of art and design. Understanding and high potential came together to prevelige you.

In our natural stone manufacturing facility, the machine park includes;

- Four CNC Bridge Cutting Machines
- One 6-Axial Robotic Arm and one 7-Axial Robotic Arm
- One CNC Wire Saw
- Two WaterJet Machines

In our factory, we are able to produce any cut-to-size material, make special types of productions with special packagings specific to your project, without the need for any cutting process at the construction site. (i.e. stairs, risers, skirtings, window sills, thresholds, balusters, columns, sinks, bath tubs, any kind of water-jet cut, or concave/convex products...)

We have the experience and technical knowledge to offer you the right solutions as a result of clear understanding of your requirements and never hesitate pushing the limits to catch the difference in each soul.

Besides natural stone, we have laminated natural stone, special design wood flooring and marquetry products fulfilling the demand and needs of high-end proejects.



## **LAMINATED NATURAL STONE PRODUCTS**

We produce laminated natural stone panels which are light, durable, transparent and appropriate to its environment. Those products can be used in both exterior & interior wall claddings, floorings (even in the spaces like elevators, yachts... etc. where the weight of natural stone is an issue) and in furnitures as well.

We reinforce (lamine) natural stone products by using aluminum, honeycomb, ceramic, plywood or glass. We present a wide range of products, product concepts for both construction and architectural design sectors.

We use technology and innovation not only for producing light marble panels to solve the installation problems; but also for generating different options and opportunities by realizing the expectation of the project and providing optimal solutions which will accord with each project's own soul.

### *Advantages of laminated natural stone products;*

- \* Lightness
- \* Natural stone usage in any space and/or environment
- \* Fast & Practical Assembly
- \* High Durability
- \* Impact Resistance
- \* Resistance to different weather conditions
- \* Environment Friendly – Sustainable Natural Material
- \* Low transportation costs
- \* Low installation costs



## **WOOD FLOORING & MARQUETRY PRODUCTS**

We present you a high quality marquetry product, which combines the World's most valuable sources with original designs. We create a new design discipline by combining different types of materials; such as marble, wood, metal, leather, glass...etc., in one design product. These unique designs are preferred to be used in the most prestigious, high-end projects.

We can create unique designs for you, or work on your own designs and manufacture special products specific to your project.

On Riga Birch plywood which is imported from Lithuania, we laminate 3.5 mm papers - obtained from Eastern European trees- with Kohen brand glue. We use Italian Ica and Euroka polishes for surface finishing.

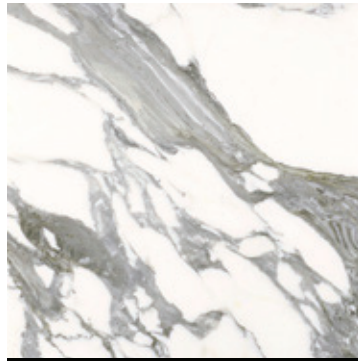
By indigenising quality principle in each stage of production process, we offer special solid & engineered parquet manufactures, production of various project-based massive furnitures and special timbers.

With increased capacity to 110,000 m2 per year in our factory, in Ankara, updated machinery and equipment, our clients can always find a wide range of products that are made of whether highly stylish modern or original classic motifs, with the best production quality.

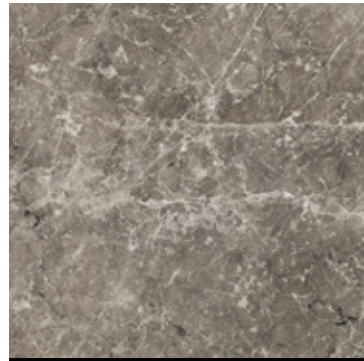
# Natural Stone



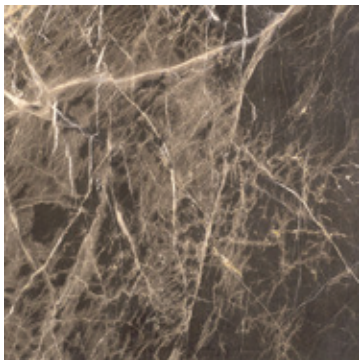
Adalia Capuccino



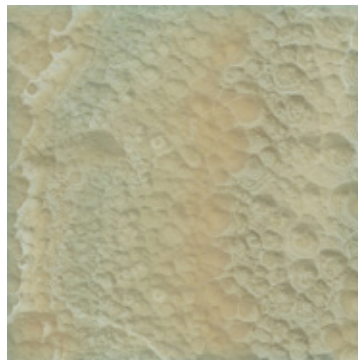
Arabescato



Arc Grey



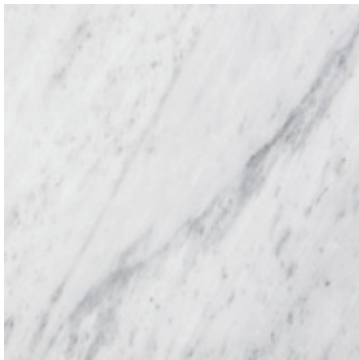
Bruno Perla



Bubble Onyx



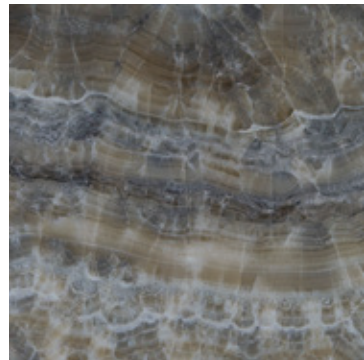
Calacatta Oro



Michigan



Crema Glass



Grey Onyx



Bianco Carrara



Bianco Dolomiti



Calacatta



Capucchino



Grey Serpegiente



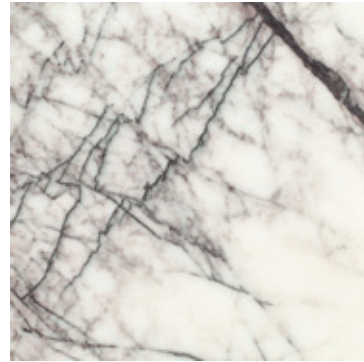
Honey Onyx



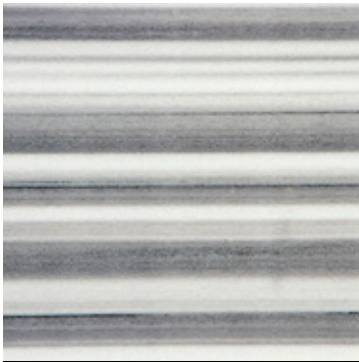
Iceberg Blue



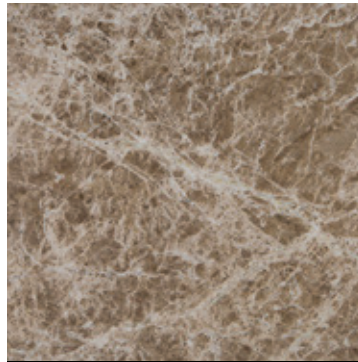
Ivory Veincut Travertine



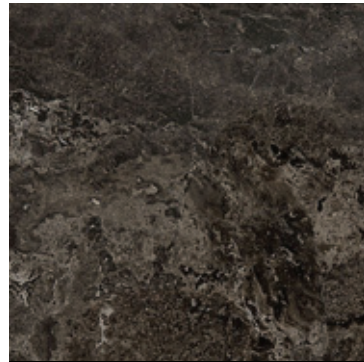
Lilac



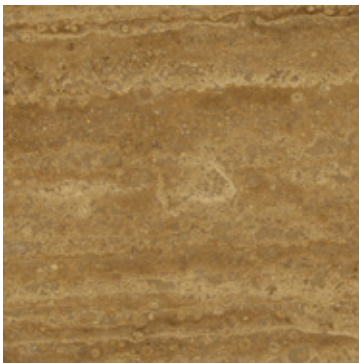
Marmara Equador



Marron Emparador



Narcisse



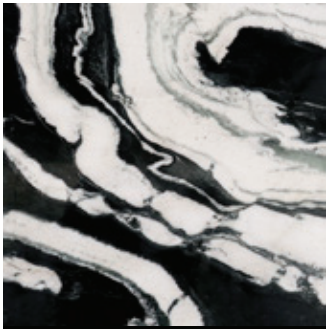
Noche Veincut Travertine



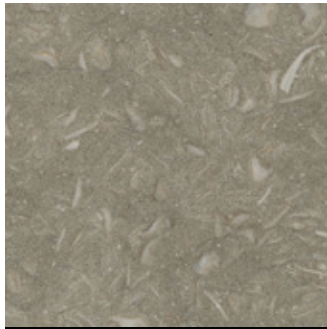
Ottoman Beige



Palissandro Turco



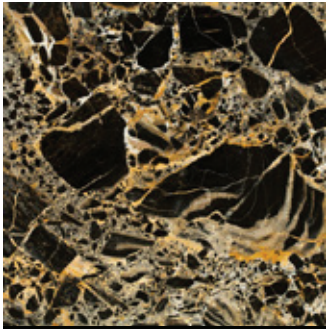
Panda White



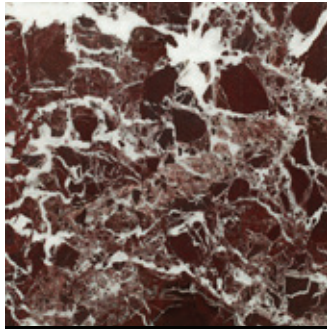
Sea Grass



Picasso



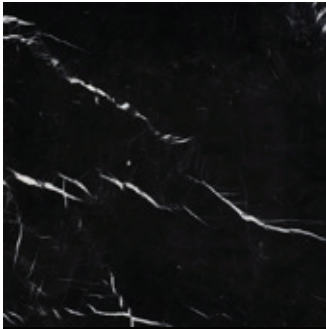
Portoro Gold



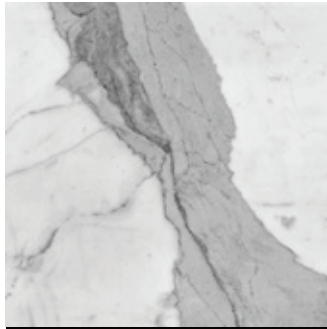
Rosso Levanto



Satin White



Silk Black



Statuario



Thassos



Tundra Grey



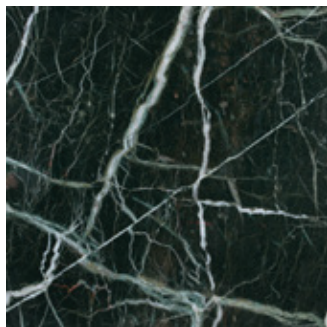
Vanilla Cream



Vanilla Onyx



White Onyx



Verde Turco

# DESARC

## KENT MANSION PROJECT





# DESARC



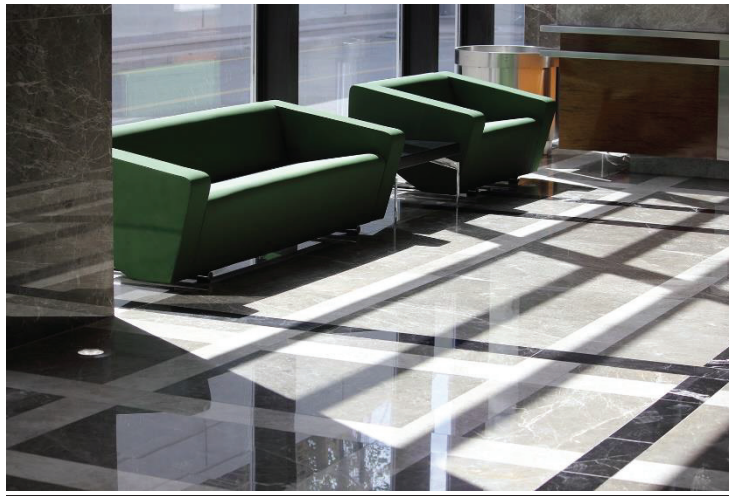
## BOSPHORUS HOTEL PROJECT



# DESARC



## AEGEAN RESIDENCE PROJECT



## FENERBAHCE PROJECT

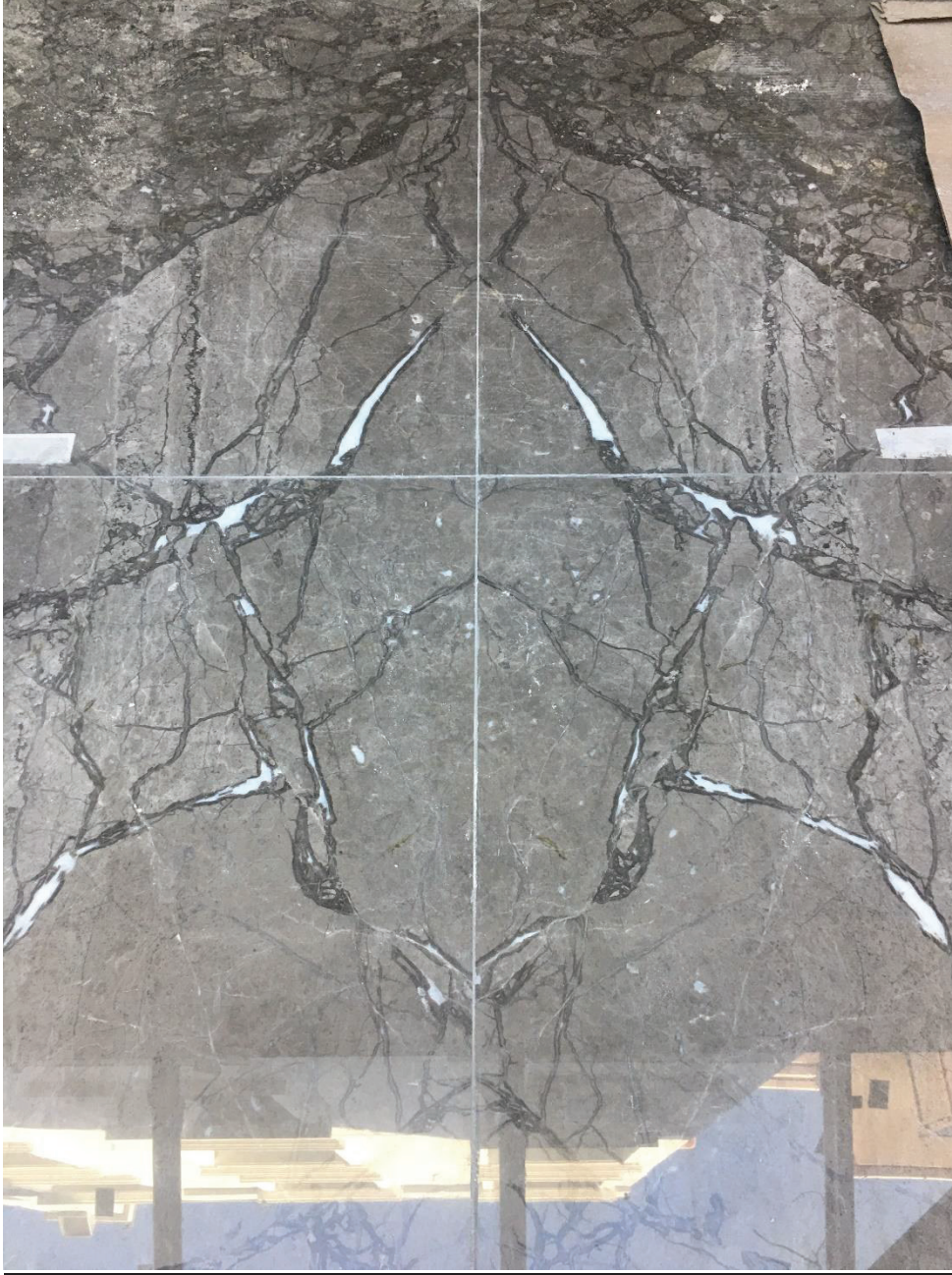


# DESARC



## NENA HOTEL PROJECT







# DESARC



# DESARC



**KANDILLI MANSION PROJECT**



D E S  R C



# DESARC











## NENEM VILLA PROJECT



# DESARC



**DESARC DİS TİCARET VE DANIŞMANLIK LTD. STİ.**

**HEAD OFFICE: ADALET MAH. MANAS BUL. NO: 47-B FOLKART TOWERS, A-BLOCK, ST#: 3406 BAYRAKLI, İZMİR 35530 TURKEY**

**PHN: +90 232 570 0120**

**[www.desarcdesign.com](http://www.desarcdesign.com)**

# DESARC



DESARC DİS TİCARET VE DANIŞMANLIK LTD. STİ.

HEAD OFFICE: ADALET MAH. MANAS BUL. NO: 47-B FOLKART TOWERS, A-BLOCK, ST#: 3406 BAYRAKLI, İZMİR 35530 TURKEY

PHN: +90 232 570 0120

[www.desarcdesign.com](http://www.desarcdesign.com)

# DESARC



# DESARC





DESARC



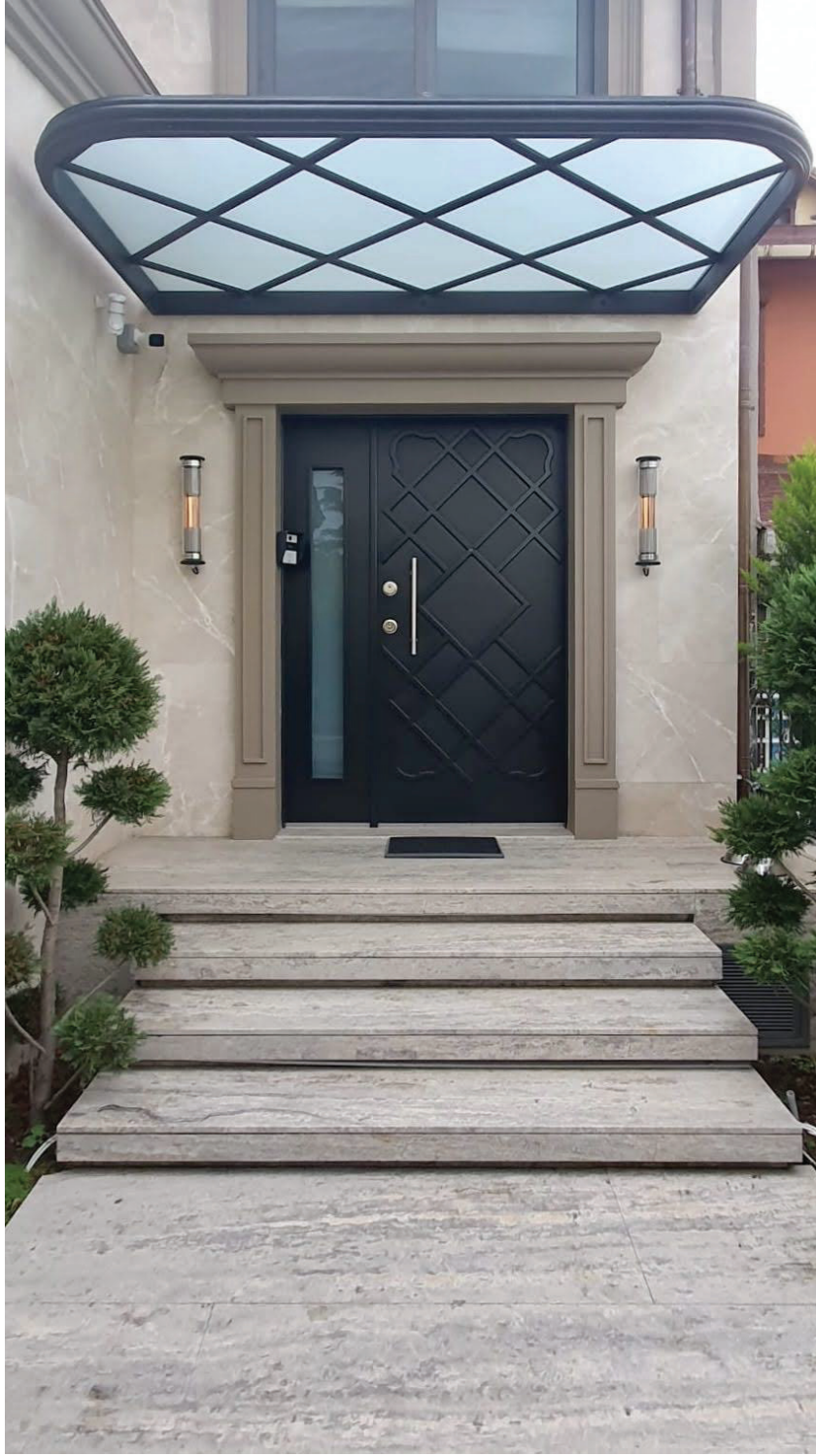
*DESARC DİS TİCARET VE DANIŞMANLIK LTD. STİ.*

*HEAD OFFICE: ADALET MAH. MANAS BUL. NO: 47-B FOLKART TOWERS, A-BLOCK, ST#: 3406 BAYRAKLI, İZMİR 35530 TURKEY*

*PHN: +90 232 570 0120*

*www.desarcdesign.com*

DESARC



**DESARC DİS TİCARET VE DANIŞMANLIK LTD. STİ.**

**HEAD OFFICE: ADALET MAH. MANAS BUL. NO: 47-B FOLKART TOWERS, A-BLOCK, ST#: 3406 BAYRAKLI, İZMİR 35530 TURKEY**

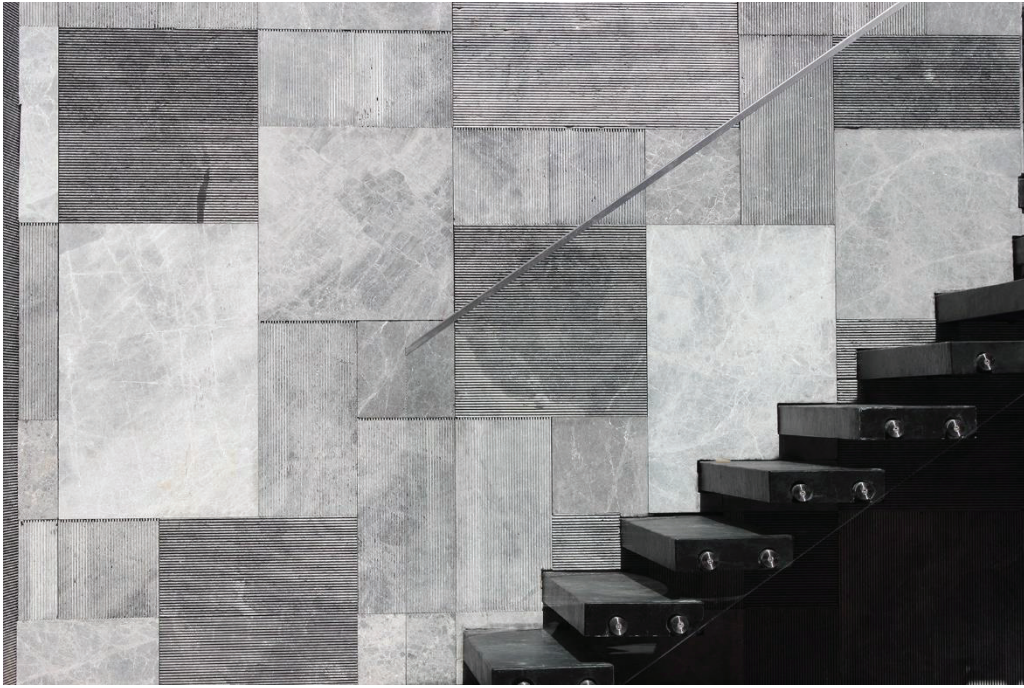
**PHN: +90 232 570 0120**

**[www.desarcdesign.com](http://www.desarcdesign.com)**

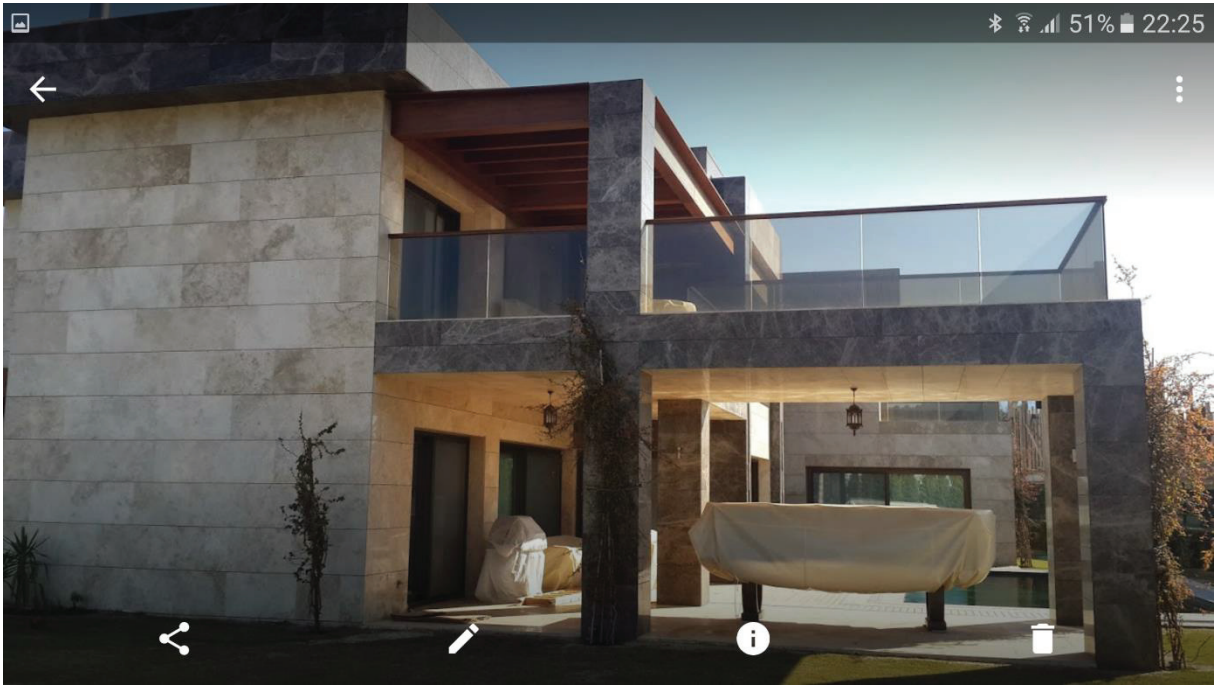




SOPHIA HOTEL PROJECT



## BODRUM VILLA PROJECTS



DESARC DIS TICARET VE DANISMANLIK LTD. STI.

HEAD OFFICE: ADALET MAH. MANAS BUL. NO: 47-B FOLKART TOWERS, A-BLOCK, ST#: 3406 BAYRAKLI, IZMIR 35530 TURKEY

PHN: +90 232 570 0120

[www.desarcdesign.com](http://www.desarcdesign.com)

# DESARC



## FORUM MALL PROJECT



# DESARC



*DESARC DIS TICARET VE DANISMANLIK LTD. STI.*

*HEAD OFFICE: ADALET MAH. MANAS BUL. NO: 47-B FOLKART TOWERS, A-BLOCK, ST#: 3406 BAYRAKLI, IZMIR 35530 TURKEY*

*PHN: +90 232 570 0120*

*[www.desarcdesign.com](http://www.desarcdesign.com)*

## SPECIAL TYPES OF PRODUCTIONS



# DESARC







# DESARC



# DESARC



**DESARC DIS TICARET VE DANISMANLIK LTD. STI.**

**HEAD OFFICE: ADALET MAH. MANAS BUL. NO: 47-B FOLKART TOWERS, A-BLOCK, ST#: 3406 BAYRAKLI, IZMIR 35530 TURKEY**

**PHN: +90 232 570 0120**

**[www.desarcdesign.com](http://www.desarcdesign.com)**

# DESARC



*DESARC DİS TİCARET VE DANIŞMANLIK LTD. STİ.*

*HEAD OFFICE: ADALET MAH. MANAS BUL. NO: 47-B FOLKART TOWERS, A-BLOCK, ST#: 3406 BAYRAKLI, İZMİR 35530 TURKEY*

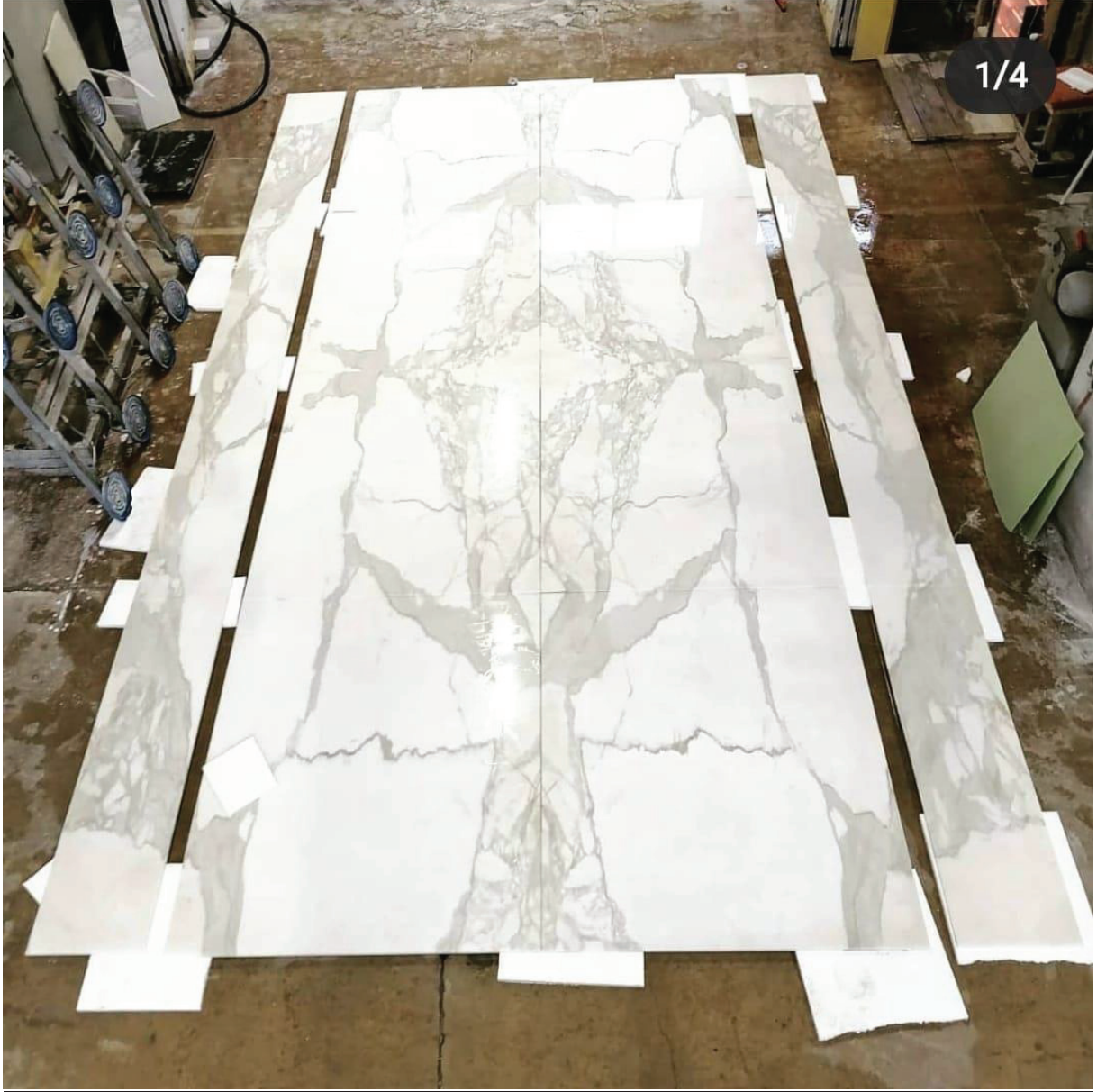
*PHN: +90 232 570 0120*

*[www.desarcdesign.com](http://www.desarcdesign.com)*

NUMER ONE RESIDENCE PROJECT



## DRY-LAY VISUALS

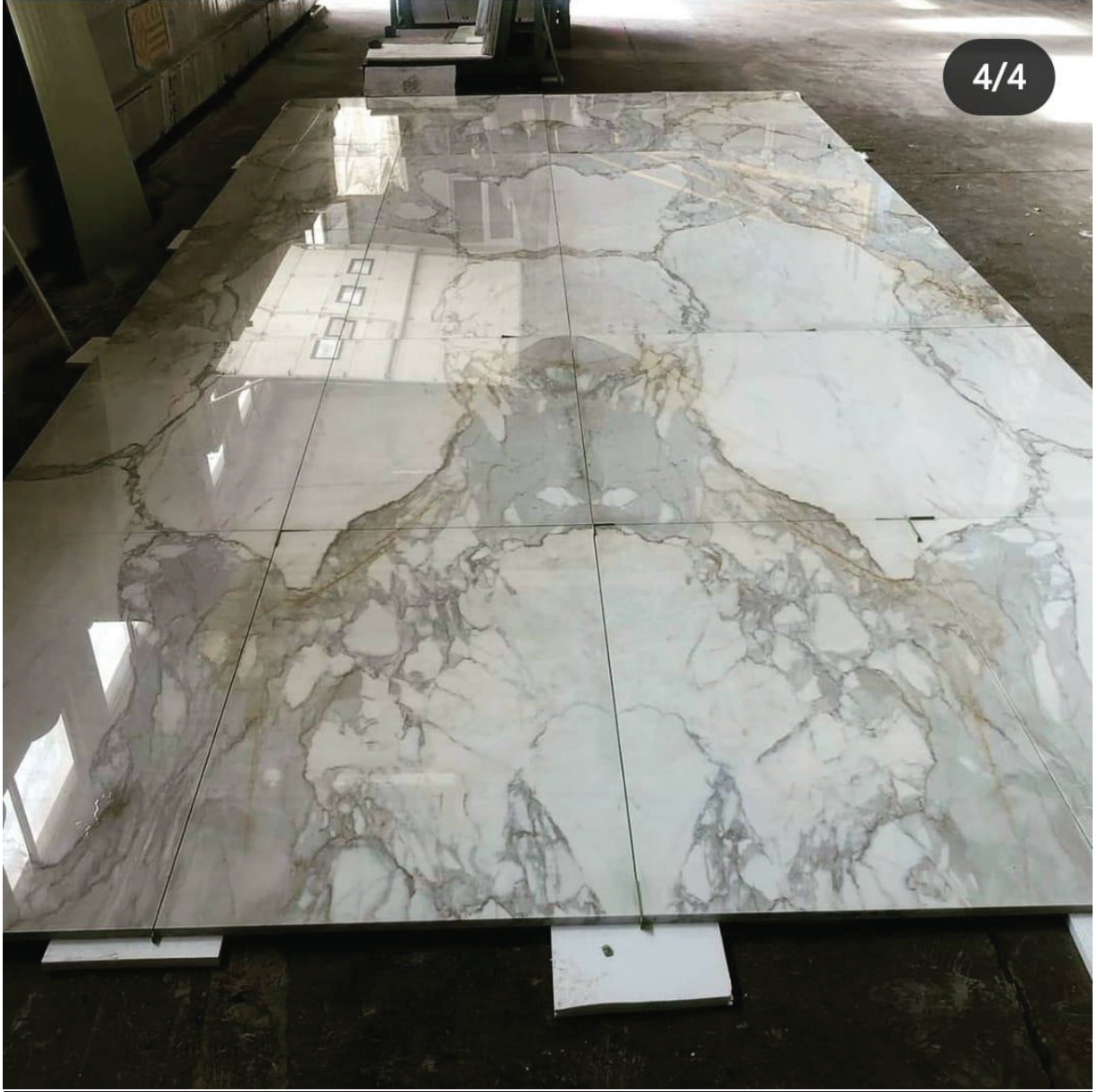


**DESARC DIS TICARET VE DANISMANLIK LTD. STI.**

**HEAD OFFICE: ADALET MAH. MANAS BUL. NO: 47-B FOLKART TOWERS, A-BLOCK, ST#: 3406 BAYRAKLI, IZMIR 35530 TURKEY**

**PHN: +90 232 570 0120**

**[www.desarcdesign.com](http://www.desarcdesign.com)**







# DESARC



# DESARC



**DESARC DİS TİCARET VE DANIŞMANLIK LTD. STİ.**

**HEAD OFFICE: ADALET MAH. MANAS BUL. NO: 47-B FOLKART TOWERS, A-BLOCK, ST#: 3406 BAYRAKLI, İZMİR 35530 TURKEY**

**PHN: +90 232 570 0120**

**[www.desarcdesign.com](http://www.desarcdesign.com)**

# DESARC



# DESARC





D E S  R C

LAMINA<sup>plus</sup>STONE<sup>®</sup>  
lightweight & sheer stone panel

## LAMINATED STONE PANELS AND PRODUCTS

We manufacture laminated natural stone panels which are light, durable, transparent and appropriate to its environment. Those products can be used for;

- exterior wall claddings and/or floorings,
- interior wall coverings and/or floorings,
- ceiling cladding,
- column coverings,
- bathtub coverings,
- doors,
- stairs and risers,
- marine/yacht interiors,
- elevators,
- furnitures (i.e. tables, coffee tables, consols, closets...etc)

Natural stone can be used in any space or surface by means of laminated natural stone products.

We reinforce (lamine) natural stone (marble, travertine, onyx or granite) by using aluminum honeycomb, ceramic, plywood or glass. Desarc presents a wide range of products and product concepts for both construction and architectural design sectors.

We use technology and innovation not only for producing light marble panels to solve the installation problems, but also for generating different options and opportunities by realizing the will, expectations of the client and providing optimal solutions accord with each project's soul.



## PRODUCT CATEGORIES

### AHC PANELS

They are light and solid composite natural stone panels, which we form by thinning natural stones (marble, travertine, onyx, granite) in 3-6 mm thickness and then laminating them with Aluminum Honeycomb.



### AHC PLUS PANELS

They are light and solid composite natural stone panels, which we apply doubled-sided lamination with Aluminum Honeycomb to thinned natural stones (marble, travertine, onyx, granite) in 3-6 mm thickness.



## AC PANELS

They are a light, solid and thin composite natural stone panels, which we form by thinning natural stones (marble, travertine, onyx, granite) in 3-6 mm thickness and then laminating them with Aluminum Composite.



## LS PANELS

They are lightweight but robust solid composite natural stone panels, which we form by thinning natural stones (marble, traverten, onyx, granite) in 3-6 mm thickness and then laminating them by LS Honeycomb (a Special Textured Honey Patch) and using special laminating resin during the process for strength.





## CER PANELS

These are the light composite natural stone panels, which we form by thinning the natural stone selections -which cause difficulties during production or application, due to weak veinings in their structures- in 3-6 mm thickness, and then laminating them with Ceramic Tiles.



## MARINE PANELS

They are the panels which we form by reinforcing natural marble with plywood. We use precision techniques that are unlike to standard marble processing technology. These products are mostly used in marine/yacht designs.



## LIGHT PANELS

They are solid, transparent composite natural stone panels, which we apply double-sided lamination with Glass. We have to use proper natural stones for this product type (such as White Marble, Onyx) which have large crystal structure for transparency, and of course we thin them in 3-5 mm thickness before lamination.



**BACKLIT DECOR PANELS**

These are the design products which we create by cutting natural stone panels laminated by Glass in geometrical and curvilinear forms. They are light and transparent.



**AHC DECOR PANEL**

These are the light design products which we create by cutting AHC panels in geometrical and curvilinear forms.



## WHY LAMINATED STONE PANELS?

### Lightness

When we use the lightest supporting material, the weight of laminated stone panels is 16 kg/m<sup>2</sup>. It is 4 times lighter than a standard marble product in 2 cm thickness. The lighter the material gets, the more usage areas it has. Besides the transportation costs are much lower because of the lightness of the products.

### Fast and Easy Installation

The installation of laminated stone panels, which are much lighter than standard natural stones, is different than the classical marble installation methods. Aluminium or stainless assembly elements are affixed to the back side of the panels with proper methods (i.e. chemical usage, screwing or canalization...). Bearing elements are attached to the walls where the stone panels will be hanged at the construction site, and the stone panels –which pass yarely- are carried by these bearing elements. Therefore, when we calculate installation speed m<sup>2</sup>-per-day, laminated natural stone panels are 70% faster and more advantageous compared to standard natural stone installation. Moreover, since the laminated stone panels are much lighter, it is very easy to transfer them from one place to another; no heavy equipments are needed.

### High Strength & Durability

Standard natural stone products can not resist even to a minimum impact. This natural fault causes failure in natural stone applications. It causes more problems especially in high-rise buildings, exterior claddings and the regions with high seismic activity.

On the other hand, laminated stone panels are formed by combining thin natural stone layers in different cell diameters with very strong technological products like aluminium honeycombs in different folio thicknesses, fiberglass, ceramic or glass by using high-strength, special lamination chemicals which vary depending on the environment it's going to be used. So this combination forms the very strong, developed and reinforced natural stone panels.

### Low Assembly and Assembly Materials Cost

The assembly cost of laminated stone panels provides 40% economical assembly when it's compared with standard 2 or 3 cm natural stone installation. Since the panels to be installed are very light, the need for the anchorage materials, which have weight bearing feature, decreases; so automatically assembly costs decrease.

### Impact Resistance

Since laminated stone panels are reinforced with strong materials, such as aluminium honeycomb, ceramic or glass, they are resistant to vertical and horizontal impacts. Natural stone products are not durable to even light impacts, which is because of its natural imperfection. So this issue can be avoided by using safe laminated stone panels instead.

### Resistance to Weather Conditions

When standard natural stone is used in exterior claddings, especially in tierra fria, some problems may occur. In cold weather conditions, water may enter inside from the microcracks resulting during the geological formation of natural stone and/or the invisible cracks caused by any impact during the transportation or installation. When it freezes inside, it may widen those cracks, it may cause dirt on the surface of the stone or it may turn the surface colour into green.

However, by using laminated stone panels, we can avoid all these problems, because chemical and supporting materials which penetrate deeply during the lamination process are waterproofed.

### Environment Friendly, Sustainable Natural Material

In today's World, where the environmental conditions change rapidly and the awareness of protecting natural resources increases, laminated stone panels stand out by offering environment friendly products and using raw materials economically.



**RAFFLES HOTEL PROJECT -- LIGHT PANEL + BACKLIT PANEL**





DESARC DIS TICARET VE DANISMANLIK LTD. STI.

HEAD OFFICE: ADALET MAH. MANAS BUL. NO: 47-B FOLKART TOWERS, A-BLOCK, ST#: 3406 BAYRAKLI, IZMIR 35530 TURKEY

FACTORY: AFYON O.S.B. 1. CAD. 10. SOK. NO: 5 AFYON 03030 TURKEY

PHN: +90 232 570 0120

[www.desarcdesign.com](http://www.desarcdesign.com)







**DESARC DİS TİCARET VE DANIŞMANLIK LTD. STİ.**

**HEAD OFFICE: ADALET MAH. MANAS BUL. NO: 47-B FOLKART TOWERS, A-BLOCK, ST#: 3406 BAYRAKLI, İZMİR 35530 TURKEY**

**FACTORY: AFYON O.S.B. 1. CAD. 10. SOK. NO: 5 AFYON 03030 TURKEY**

**PHN: +90 232 570 0120**

**[www.desarcdesign.com](http://www.desarcdesign.com)**

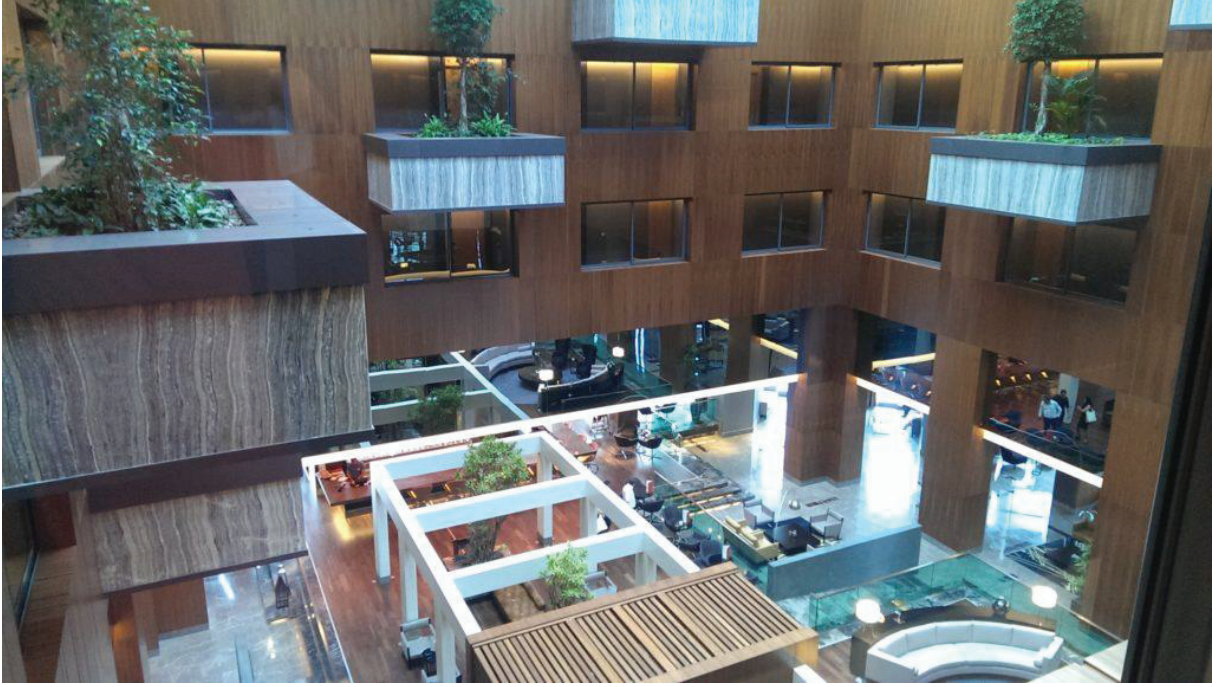


**RADISSON BLUE HOTEL PROJECT -- GLASS LAMINATION**



DESARC

LAMINASTONE<sup>®</sup>  
lightweight & sheer stone panel



---

DESARC DIS TICARET VE DANISMANLIK LTD. STI.  
HEAD OFFICE: ADALET MAH. MANAS BUL. NO: 47-B FOLKART TOWERS, A-BLOCK, ST#: 3406 BAYRAKLI, IZMIR 35530 TURKEY  
FACTORY: AFYON O.S.B. 1. CAD. 10. SOK. NO: 5 AFYON 03030 TURKEY  
PHN: +90 232 570 0120  
[www.desarcdesign.com](http://www.desarcdesign.com)

**M GALLERY BY SOFITEL HOTEL PROJECT -- CER PANEL**

















DESARC DİS TİCARET VE DANIŞMANLIK LTD. STİ.

HEAD OFFICE: ADALET MAH. MANAS BUL. NO: 47-B FOLKART TOWERS, A-BLOCK, ST#: 3406 BAYRAKLI, İZMİR 35530 TURKEY

FACTORY: AFYON O.S.B. 1. CAD. 10. SOK. NO: 5 AFYON 03030 TURKEY

PHN: +90 232 570 0120

[www.desarcdesign.com](http://www.desarcdesign.com)



**HYATT REGENCY HOTEL PROJECT -- AHC PANEL**



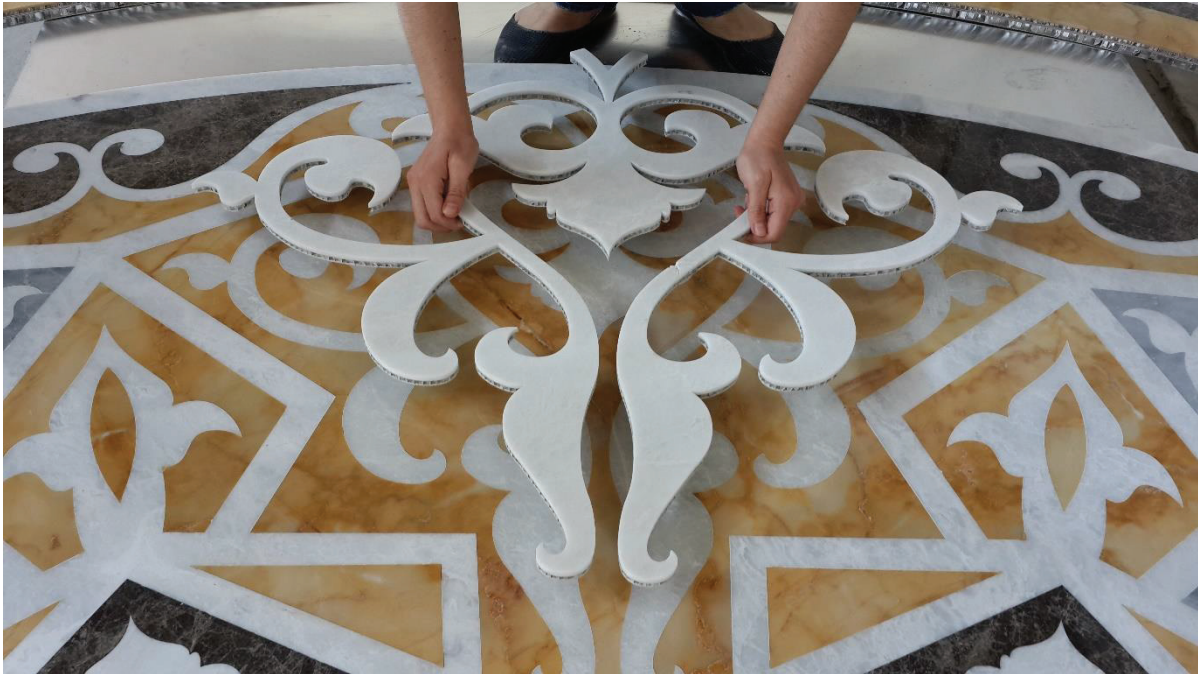


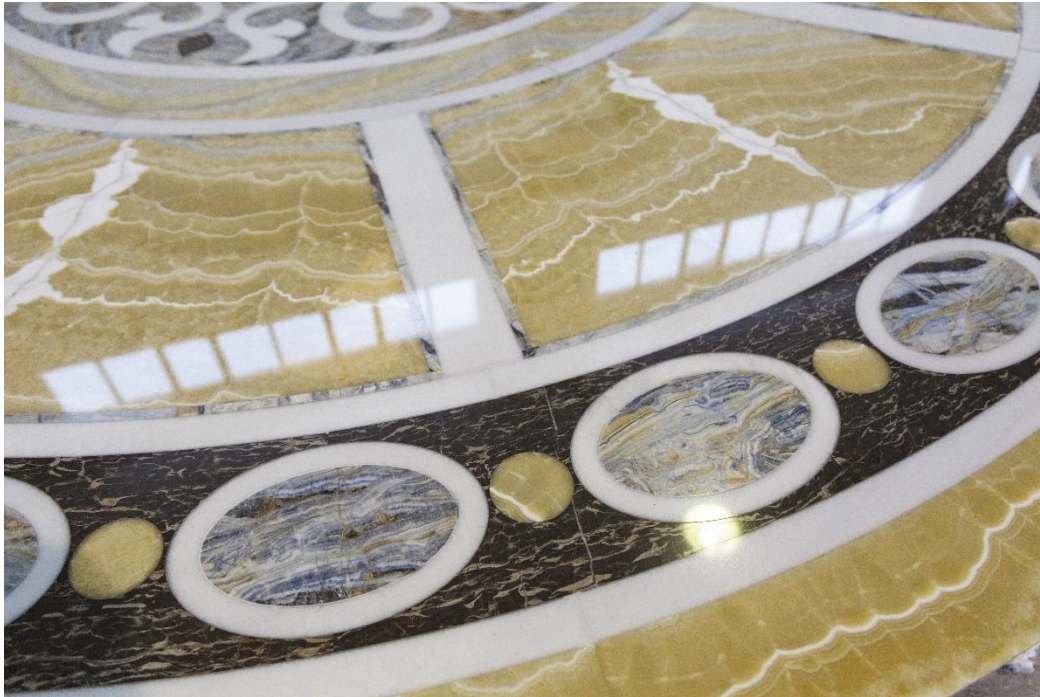






**80 MT M/Y SUPER YACHT PROJECT -- AHC PANEL, AHC DECOR PANEL**







PRESIDENCY PALACE PROJECT -- AHC PANEL



**VAKKO STORE PROJECT - AHC PANEL**



**AMAZON CAMPUS BUILDING PROJECT -- AHC PANEL**





DESARC DIS TICARET VE DANISMANLIK LTD. STI.

HEAD OFFICE: ADALET MAH. MANAS BUL. NO: 47-B FOLKART TOWERS, A-BLOCK, ST#: 3406 BAYRAKLI, IZMIR 35530 TURKEY

FACTORY: AFYON O.S.B. 1. CAD. 10. SOK. NO: 5 AFYON 03030 TURKEY

PHN: +90 232 570 0120

[www.desarcdesign.com](http://www.desarcdesign.com)





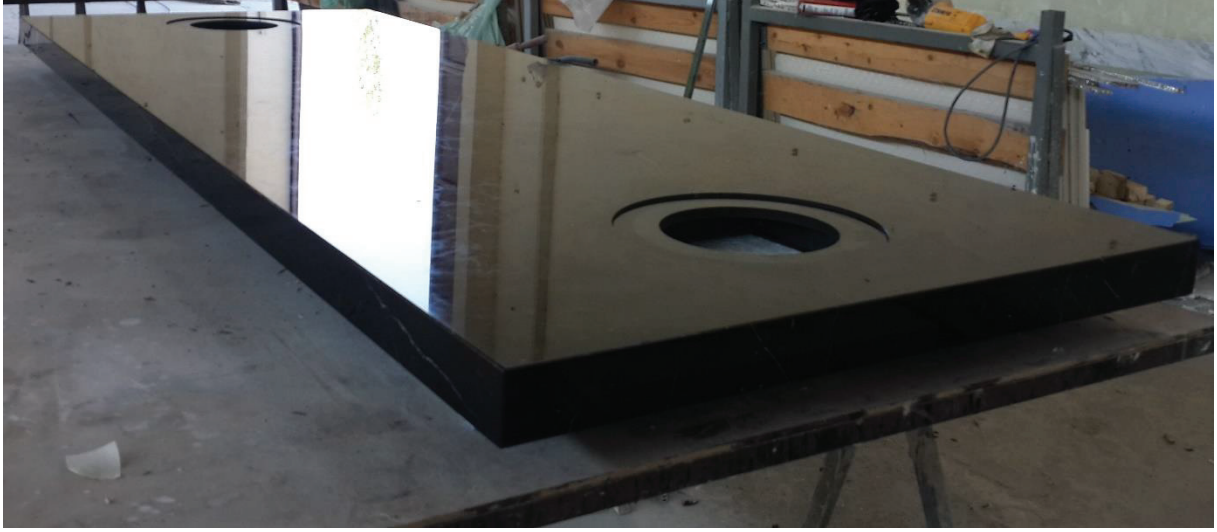


**FURNITURES -- AHC PANEL**

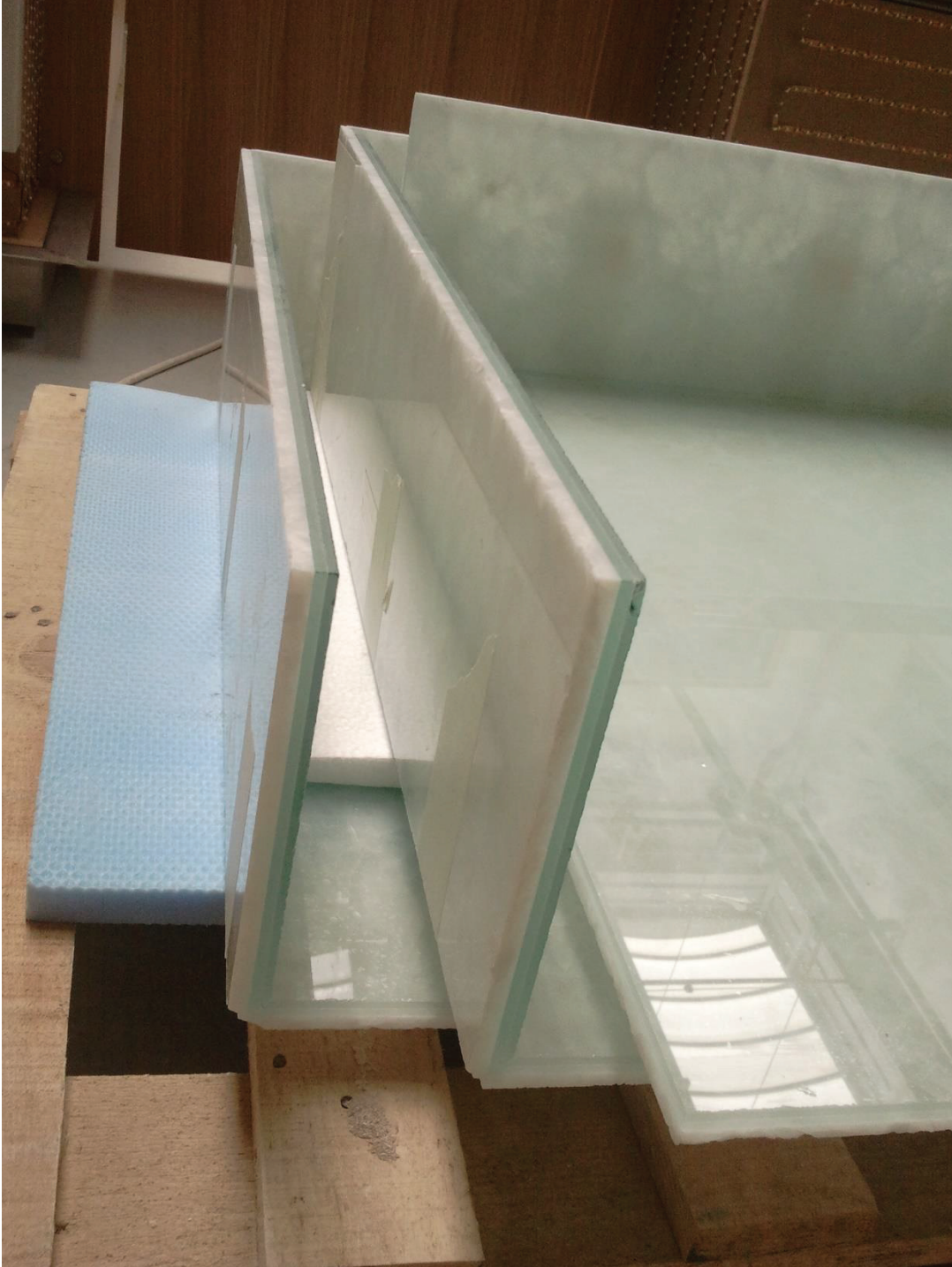










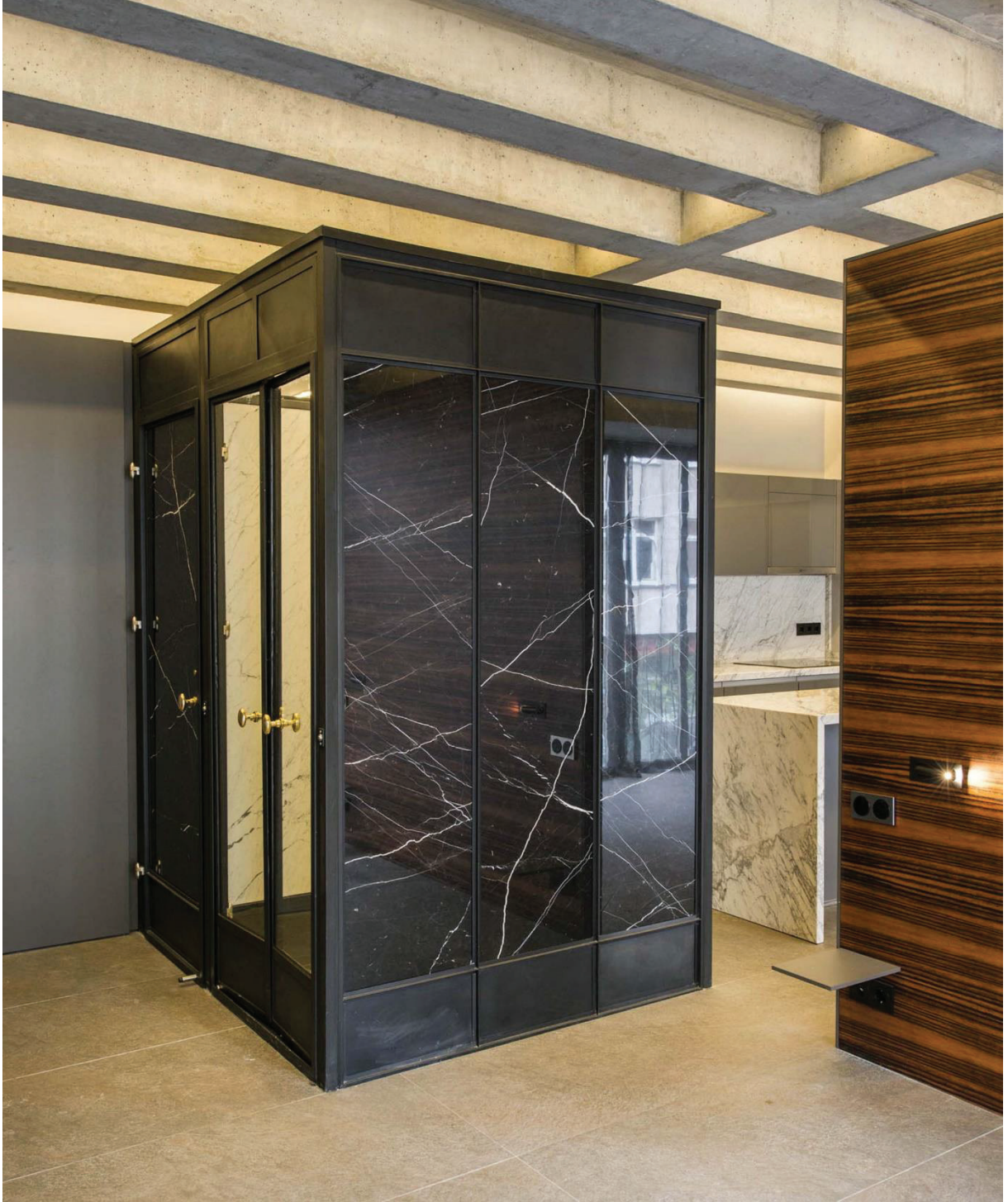














Texture + Collection

%100 NATURAL STONE



Travertine

Ceramic

# Texture + Collection

WELLEN DESIGN

%100 NATURAL STONE



→ Travertine  
→ Ceramic

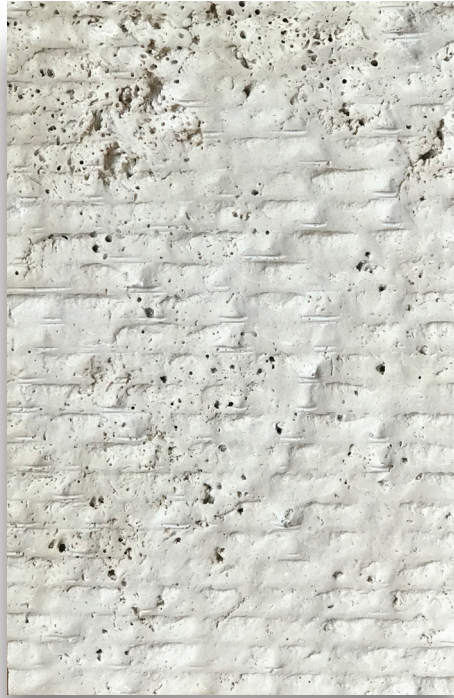
LAMINASTONE

DESARC

# Texture + Collection

WATERFALL DESIGN

%100 NATURAL STONE



Travertine  
Ceramic

DESARC

# Texture + Collection

HILL DESIGN

%100 NATURAL STONE



Travertine  
Ceramic

DESARC



# Texture + Collection

RUSTIC DESIGN

%100 NATURAL STONE



→ Travertine  
→ Ceramic

DESARC

# Texture + Collection

EVEREST DESIGN

%100 NATURAL STONE



Travertine  
Ceramic

DESARC

# Texture + Collection

SICILIA DESIGN

%100 NATURAL STONE



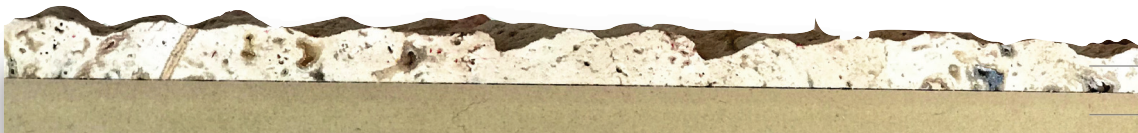
Travertine  
Ceramic

DESARC

# Texture + Collection

TIGRIS DESIGN

%100 NATURAL STONE



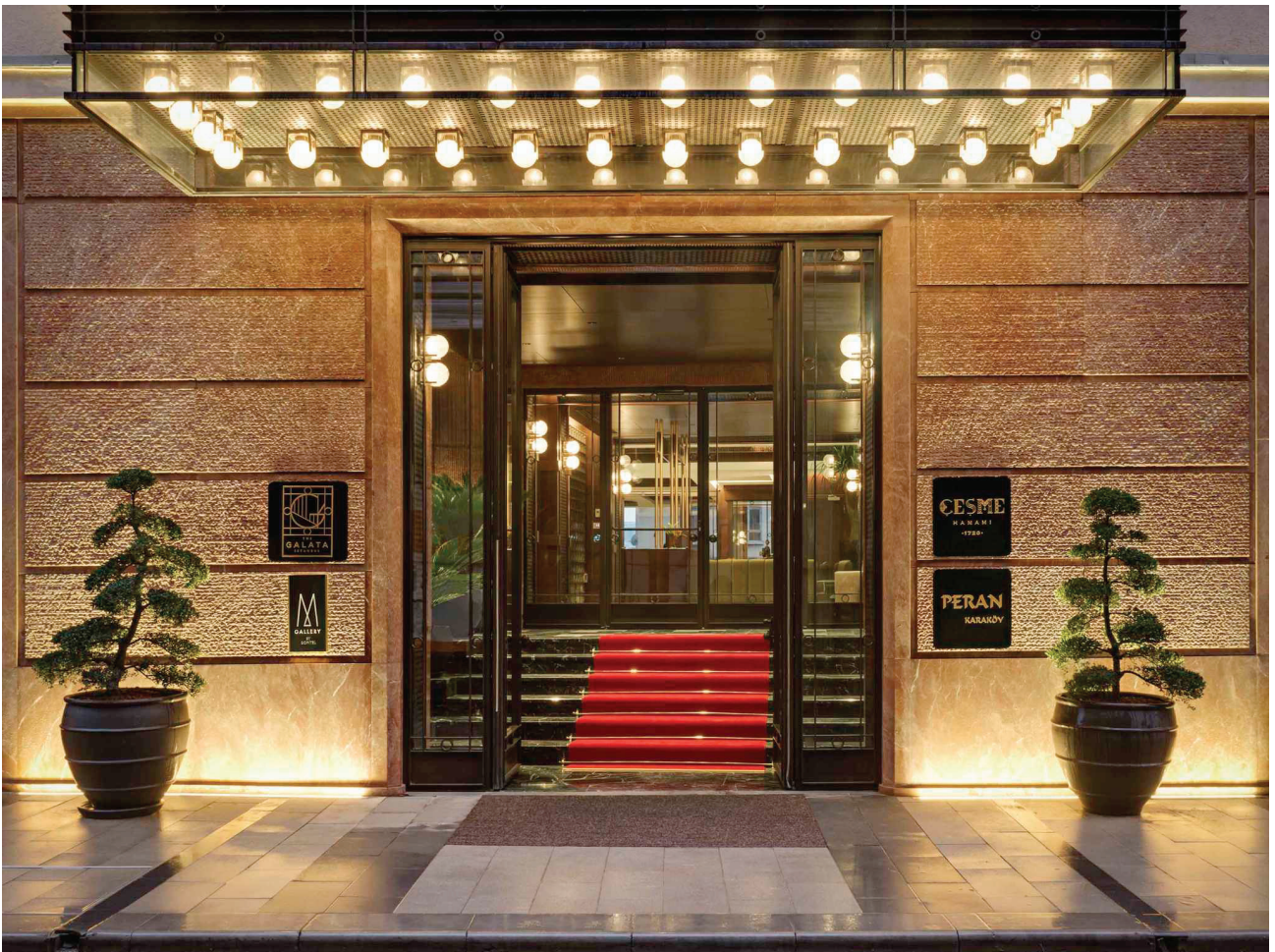
→ Travertine  
→ Ceramic

DESARC

# Texture + Collection

%100 NATURAL STONE







DESARC

retro

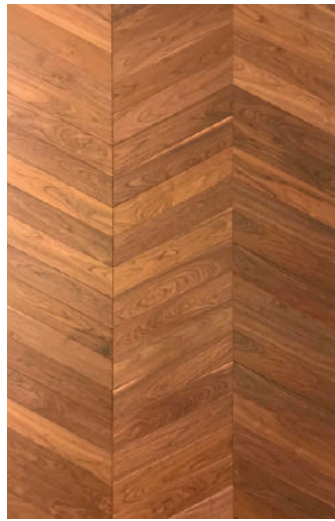


CHEVRON,  
HERRINGBONE  
& PLANKS





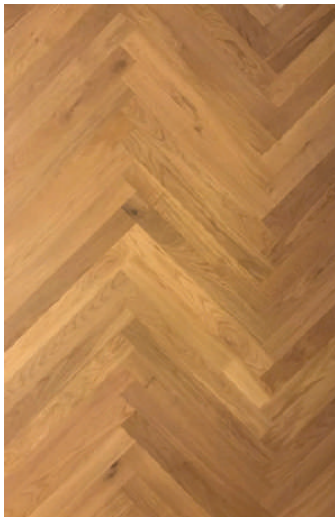
**SANNA**  
CHEVRON, ASH BROWNE



**ZETA**  
CHEVRON, A. WALNUT



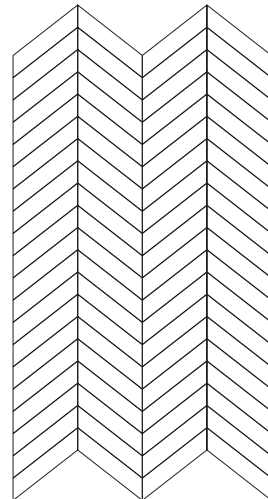
**LUNA**  
CHEVRON, SILVER METALLIC



**FIDUS**  
HERRINGBONE, EUROPEAN OAK



**TELLUS**  
CHEVRON, EUROPEAN OAK





MOON  
HERRINGBONE



MOON STONE  
HERRINGBONE



**ARES**  
E. OAK, DEEP BRUSHED & BEVELLED



**ARMIN**  
E. OAK, SAWN CUT & BEVELLED,  
BRASS INSERTED



**LOTIS**  
E. OAK, SAWN CUT & BEVELLED



**ROMANO**

E. OAK, DEEP BRUSHED & BEVELLED



**TRITON**

E. OAK, SAWN CUT & BEVELLED



**MARINO BUTTERFLY**

E. OAK, SAWN CUT & BEVELLED



**RSA**

E. OAK, DEEP BRUSHED & BEVELLED



**RSC**

E. OAK, SAWN CUT & BEVELLED







The background is a dark, rich brown wood with a prominent vertical grain. A sharp, light-colored diagonal line cuts across the image from the bottom right towards the center. The text 'MODERN LINES' is centered horizontally and partially overlaid by this diagonal line.

# MODERN LINES

Perfection in lifestyle



**Emma Robson**  
Designer

Emma Robson grew up in Cape Town, South Africa, studied at Parsons School of Design in New York, and now lives and works in the US. Emma is a commercially astute and solution-orientated interior and product designer with over two decades of experience. She has established a reputation as a highly collaborative creative ability to adapt to different briefs and deliver successful outcomes for both the manufacturer and product user. Central to her role is understanding how the workplace and hospitality environments are evolving and translating this into new and better product designs. Accelerated digitalization, a greater focus on sustainability, creating a more collaborative environment for an increasingly diverse team are just some of the trends workplace designers need to understand and embrace. Emma's approach is to combine innovative forward-looking design with a focus on quality, sustainable manufacturing, and commercial requirements. By working closely with manufacturers, she understands her products holistically, from their engineering, builds, placement, use, and life expectancy to ensure expectations are met and usually exceeded.

#### Cappa & Docia

On a recent trip to Cappadocia, I was inspired by the beautiful organic shapes found in the stunning rock formations. When designing Cappa and Docia my first goal was to create timeless designs with a refined elegance that are easily customizable allowing for endless possibilities. My second was to create designs that celebrate natural organic shapes highlighting the natural patterns and texture found in wood. Cappa and Docia exemplify a rational yet organic approach to design conveying a sense of serenity, balance, and space.



#### CAPPA

OAK NATUREL



**CAPPA**

OAK, REACTIVE STAINED



**DOCIA**

OAK NATUREL





**FLAME**

OAK



**56 S**

OAK



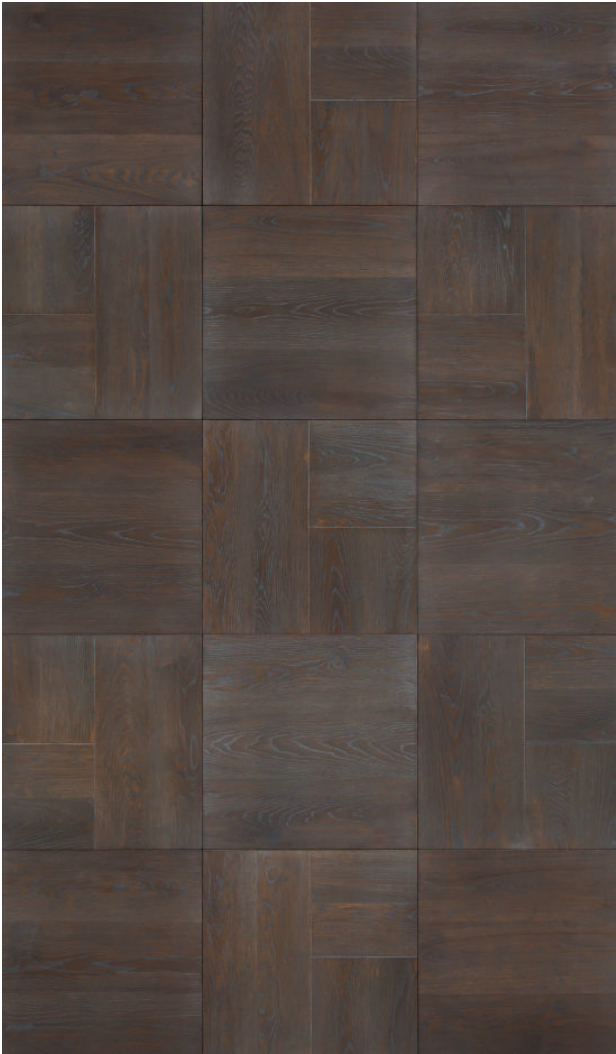
**PENTA**

OAK



**WINGS**

OAK, REACTIVE STAINED/SILVER EFFECT OILED



**SQUAREZ**

OAK, REACTIVE STAINED/SILVER EFFECT OILED



**BLADE**

OAK, REACTIVE STAINED/SILVER EFFECT OILED



Expectations,  
Dreams and even lives change in time...

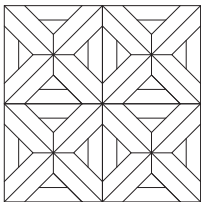




CLASSIC MARQUETRY

A photograph of a wooden floor with a geometric pattern of interlocking hexagons. The wood has a natural grain and varying shades of brown. In the upper left, a white, multi-petaled flower with a green bud is visible. To its right, a branch with small, round green leaves extends across the frame. The word "ANELLO" is written in a white, thin, sans-serif font across the center of the image.

ANELLO



**ANELLO OAK**

EUROPEAN OAK BRUSHED & BEVELLED

W. 600 mm

L. 600 mm

T. 15.5 mm

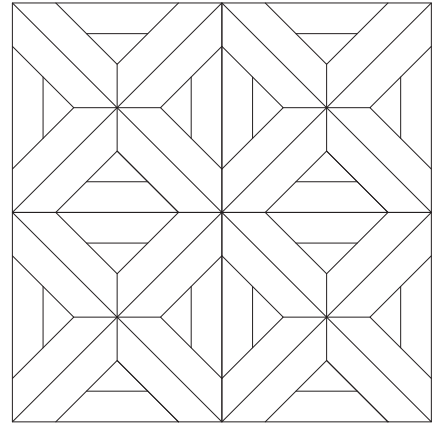




**ANELLO BLEACH**  
EUROPEAN OAK, BRUSHED & BEVELLED



**ANELLO WALNUT**  
A. WALNUT, BRUSHED & BEVELLED



**ANELLO**  
600 mm x 600 mm x 15.5 mm



**ANELLO MERBAU**  
MERBAU, BEVELLED



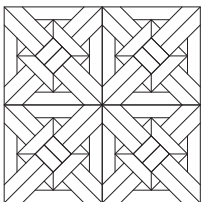
**ANELLO OAK**  
OAK, REACTIVE STAINED



**ANELLO TEAK**  
TEAK, BRUSHED & BEVELLED



CULEBRA

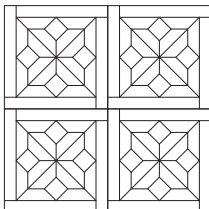
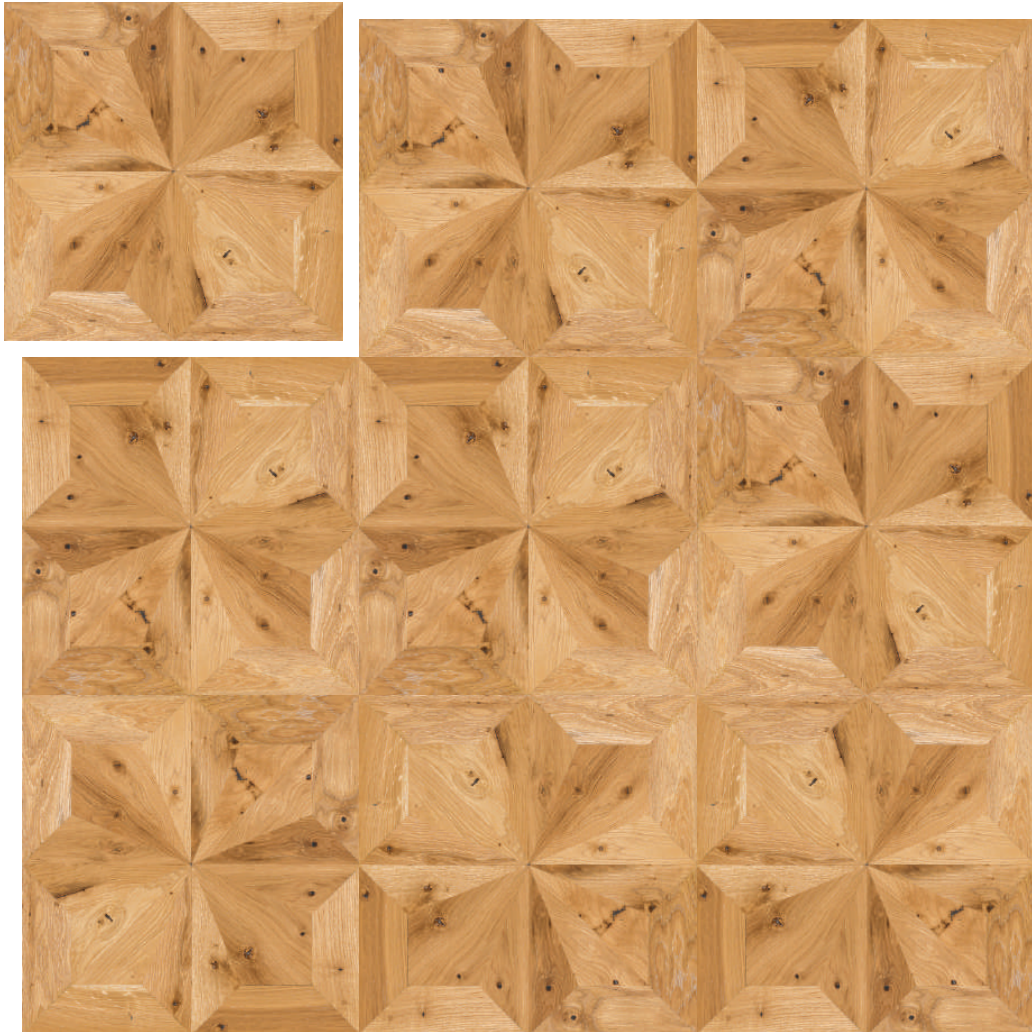


**CULEBRA OAK**  
EUROPEAN OAK  
BRUSHED & BEVELLED  
W. 600 mm  
L. 600 mm  
T. 15.5 mm



VIRGINE





**VIRGINE OAK**

EUROPEAN OAK

BRUSHED

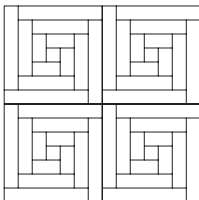
W. 600 mm

L. 600 mm

T. 15.5 mm



PIZZI



**PIZZI OAK**

EUROPEAN OAK

BRUSHED & BEVELLED

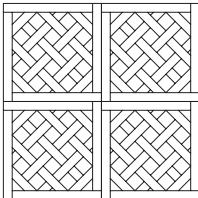
W. 600 mm

L. 600 mm

T. 15.5 mm

A decorative arrangement of dried flowers in a bowl on a lace doily, set on a wooden floor. The arrangement includes purple, orange, and pink flowers. The floor is made of light-colored wood with a geometric pattern.

SERPANTE



**SERPANTE OAK**

EUROPEAN OAK

SLIGHTLY BRUSHED & BEVELLED

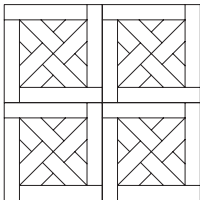
W. 600 mm

L. 600 mm

T. 15.5 mm



PENELOPE



**PENELOPE WALNUT**

A. WALNUT  
SLIGHTLY BRUSHED & BEVELLED  
W. 600 mm  
L. 600 mm  
T. 15.5 mm



**CRATOS OAK WALNUT**

EUROPEAN OAK, A. WALNUT, BRUSHED & BEVELLED



**ANTIOPE OAK**

EUROPEAN OAK, BEVELLED



**MARCELLO OAK**

EUROPEAN OAK, BRUSHED & BEVELLED



**FEDORA OAK**

EUROPEAN OAK, BRUSHED & BEVELLED



**PENELOPE OAK**

EUROPEAN OAK, BRUSHED & BEVELLED



**KEJMAN OAK WALNUT**

EUROPEAN OAK, A. WALNUT, BRUSHED & BEVELLED







**CAVALLE**

OAK, REACTIVE STAINED



**ANELLO**

OAK, REACTIVE STAINED



**VIRGINE BOLD STAINED**

EUROPEAN OAK, DEEP BRUSHED & BEVELLED



**VIRGINE OAK**

EUROPEAN OAK, BRUSHED & BEVELLED



**CULEBRA**

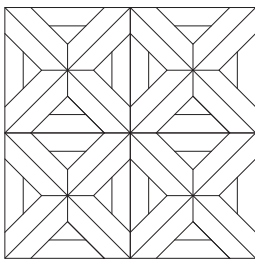
EUROPEAN OAK



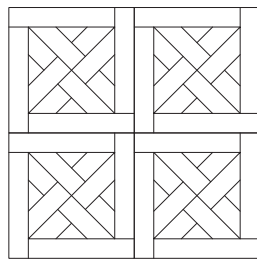
**SALUS**

EUROPEAN OAK, BRUSHED

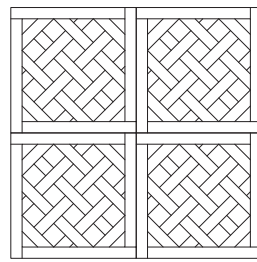
# CLASSIC MARQUETRY



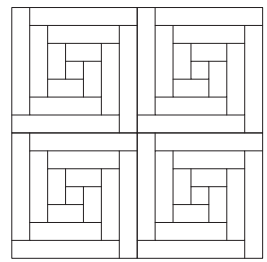
ANELLO



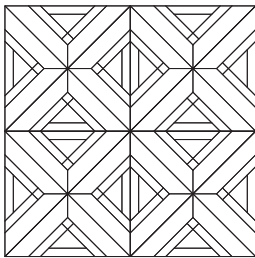
PENELOPE



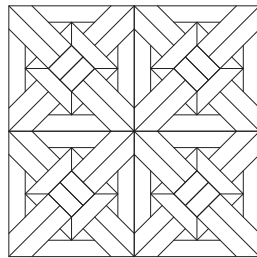
SERPANTE-1



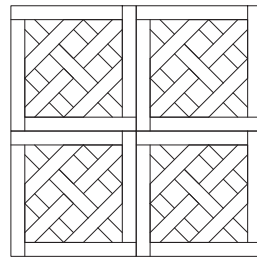
PIZZI



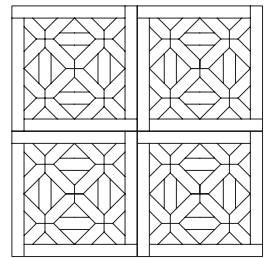
ANELLO-X



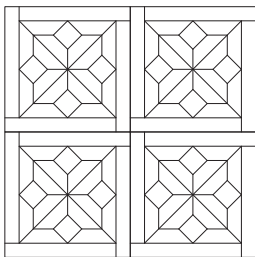
CULEBRA



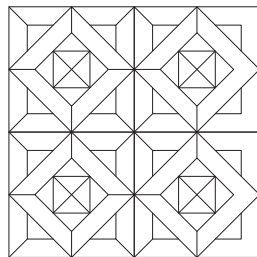
SERPANTE-2



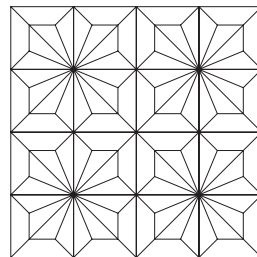
GOYA



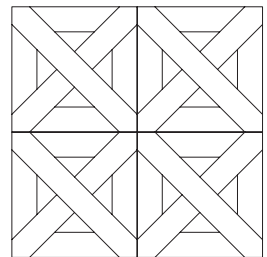
MARCELLO



SALUS



VIRGINE



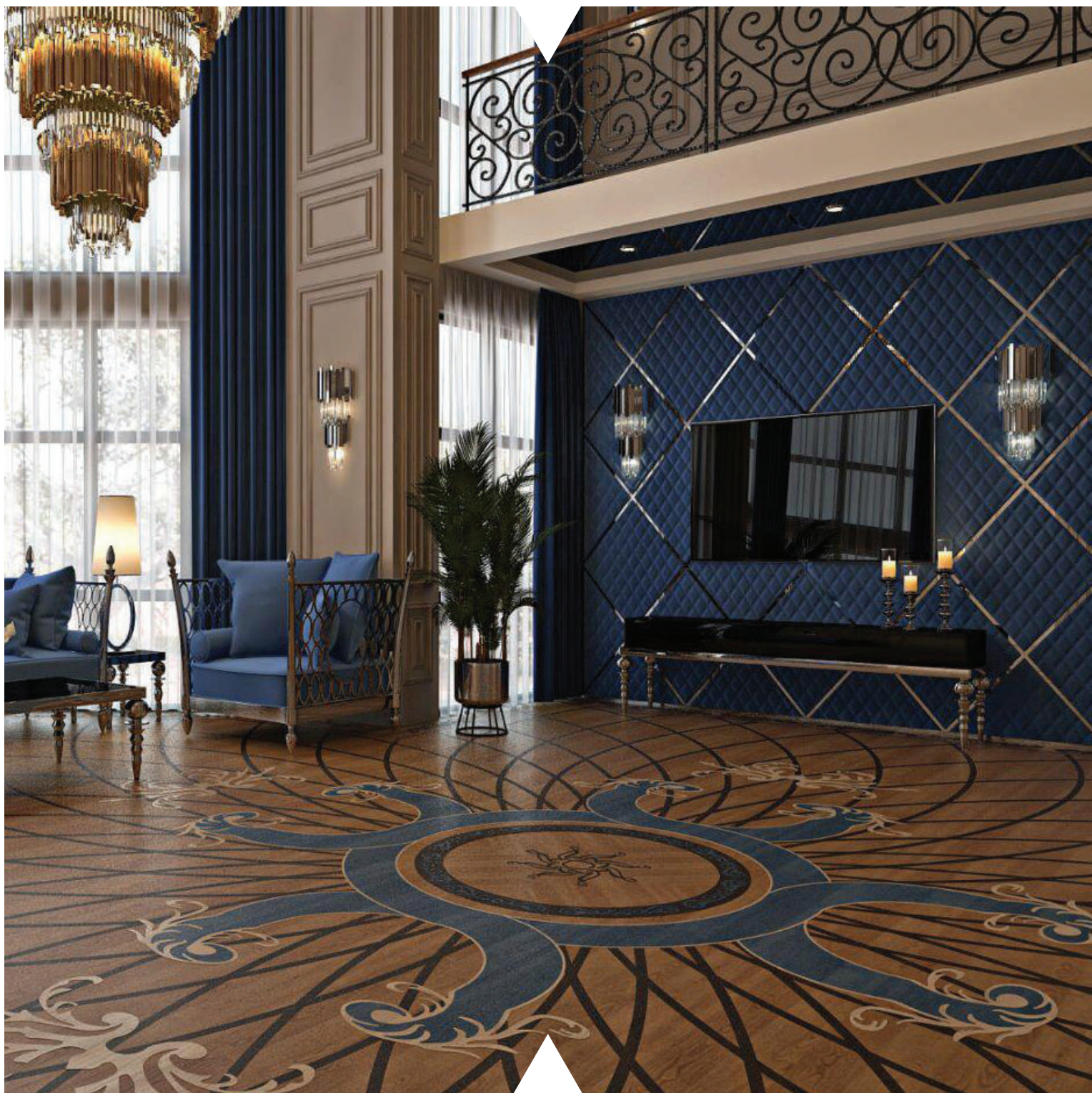
CAVALLE

A close-up photograph of a plant with vibrant red, spiky flowers and green leaves against a dark background. The flowers are in various stages of bloom, with some showing bright red stamens and others as buds. The leaves are a bright, healthy green. The overall composition is artistic and detailed.

Prestigious life spaces gain significance  
when mixed with aesthetics.

# ART WORK







**ADMETOS**

ASH, TEAK, PADOUK, BLUE WOOD



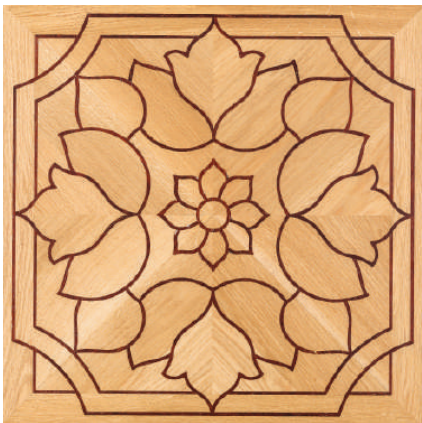
**BLANCA**

WENGE, OAK



**BLANCA BLUE**

OAK & BLUE WOOD



**BOLEO**

PADOUK, OAK



**BONUCCI**

A. WALNUT, WENGE



**EOS**

OAK, CANADIAN MAPLE



**FENNY**

OAK, A. WALNUT



**KEOPS**

OAK, A. WALNUT, WENGE



**MIKERINOS**

A. WALNUT, OAK



**NORVIN**

OAK, CANADIAN MAPLE



**POLYANNA**

OAK, WENGE, PADOUK



**SWETA**

OAK, A. WALNUT, PADOUK, WENGE





**RAPHAEL**

OAK, WENGE, SAPENLIJI



**RAPHAEL BLUE**

OAK, WENGE, BLUE WOOD



**TITAN**

A. WALNUT, OAK



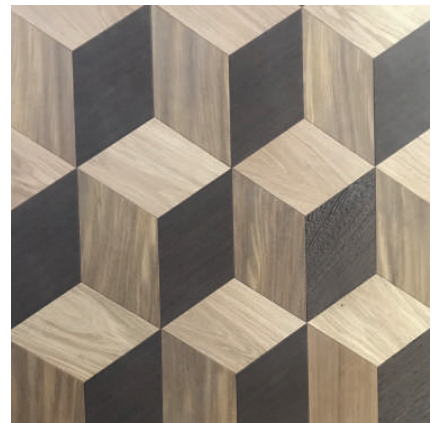
**VIVO**

A. WALNUT, OAK, CANADIAN MAPLE



**ZEUS**

A. WALNUT, CANADIAN MAPLE



**ZUMA**

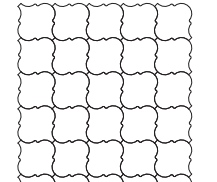
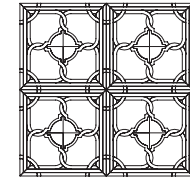
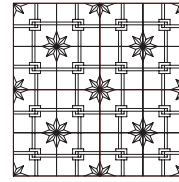
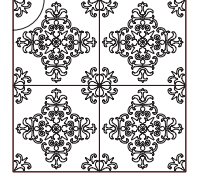
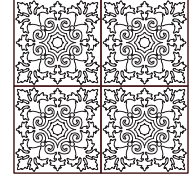
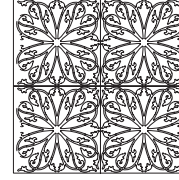
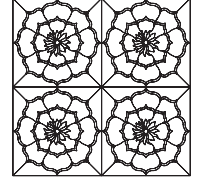
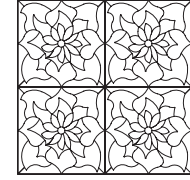
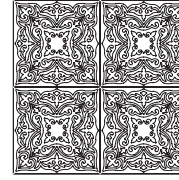
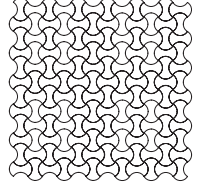
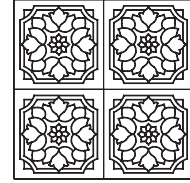
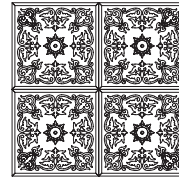
OAK, AFRORMOSIA, WENGE



LOOP



# ART WORK MARQUETRY



W. 600 mm L. 600 mm T. 15.5 mm

*Talebe göre özel ölçülerde üretim yapılmaktadır! | Dimensions can change on request!*



Prestige is a journey that lasts forever





**FORS**

OAK, WENGE, CANADIAN MAPLE, SAPELLI



**GENOVA**

OAK, WENGE



**HESTIA**

AMERICAN RED OAK, MERBAU



**PEPE**

OAK, MUTENYE, CANADIAN MAPLE, A. WALNUT



**RISUS**

OAK, A. WALNUT



**ROS**

OAK, ASH, BILINGA, A. WALNUT



**SERPANTE HAND SCRAPPED**

RECLAIMED OAK



**VERONICA**

AMERICAN RED OAK, SAPELLI



**AGAPI**

OAK, WENGE, A. WALNUT



**BENDIS**

OAK, MERBAU



**BIANNA**

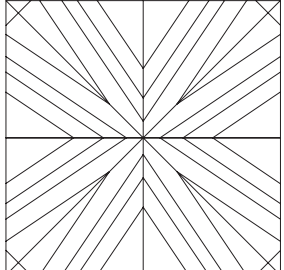
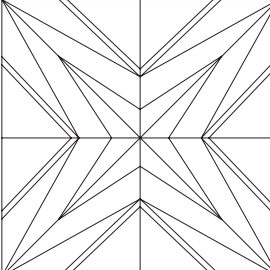
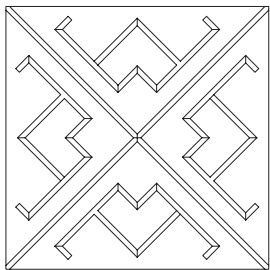
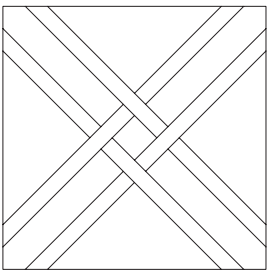
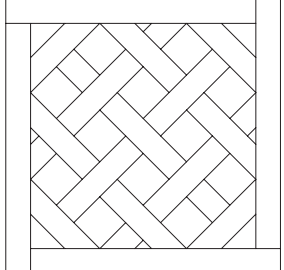
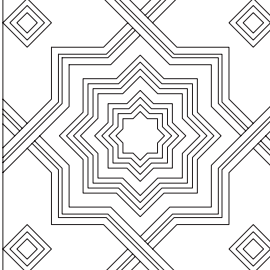
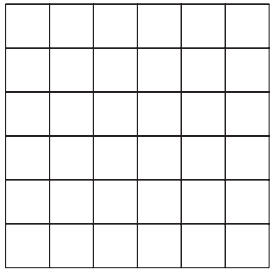
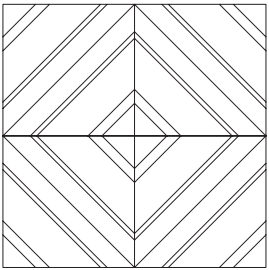
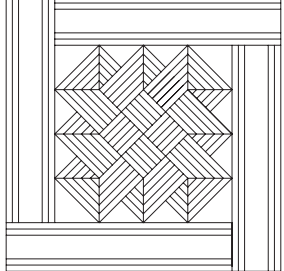
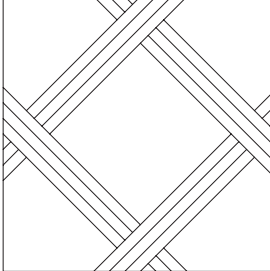
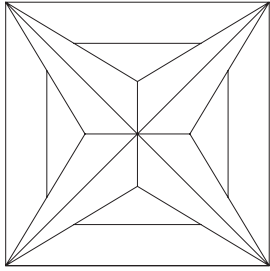
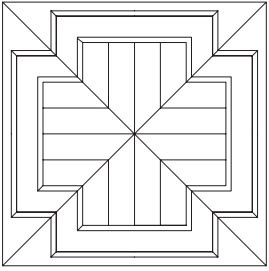
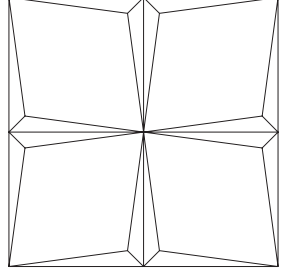
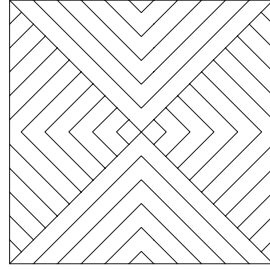
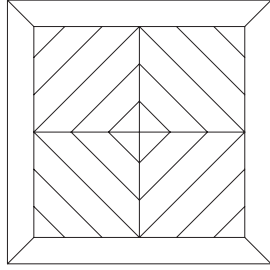
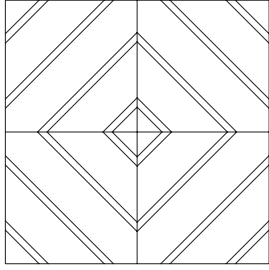
OAK, A. WALNUT



**BRUEGEL**

OAK, WENGE, CANADIAN MAPLE





W. 600 mm L. 600 mm T. 15.5 mm

Talebe göre özel ölçülerde üretim yapılmaktadır! / Dimensions can change on request!



Richness of comfort items creates Prestige!

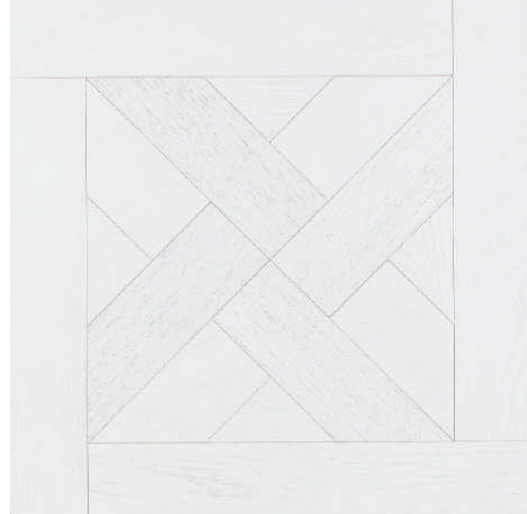
# LACCA





**PENELOPE SILVER**

DEEP BRUSHED & BEVELLED



**PENELOPE WHITE**

DEEP BRUSHED & BEVELLED



**PENELOPE SILVER LIGHT**

DEEP BRUSHED & BEVELLED



**PENELOPE RUBY**

DEEP BRUSHED & BEVELLED



**PENELOPE PEARL**

DEEP BRUSHED & BEVELLED



**ROSSI DORE**

DEEP BRUSHED & BEVELLED



**ROSSI GOLD**

DEEP BRUSHED & BEVELLED

A glass sphere, likely a decorative object, is shown in the foreground on the right side of the image. It is resting on a piece of weathered, dark wood. The sphere is highly reflective, mirroring the surrounding environment. The reflection shows a dense forest with trees and foliage, with a mix of green and yellowish-brown tones, suggesting an autumn setting. The background of the image is a blurred, out-of-focus forest scene, matching the reflection in the sphere. The overall lighting is soft and natural, creating a serene and elegant atmosphere.

Elegance in each detail!  
Living spaces are now more elegant and impressive



# ARTE DUO







**FENNY 304**  
EUROPEAN OAK & STAINLESS STEEL



**FENNY 304**  
A. WALNUT & STAINLESS STEEL



**LIMA WHITE ROSE**  
A.WALNUT, MARBLE



**LIMA GREEN**  
A.WALNUT, MARBLE



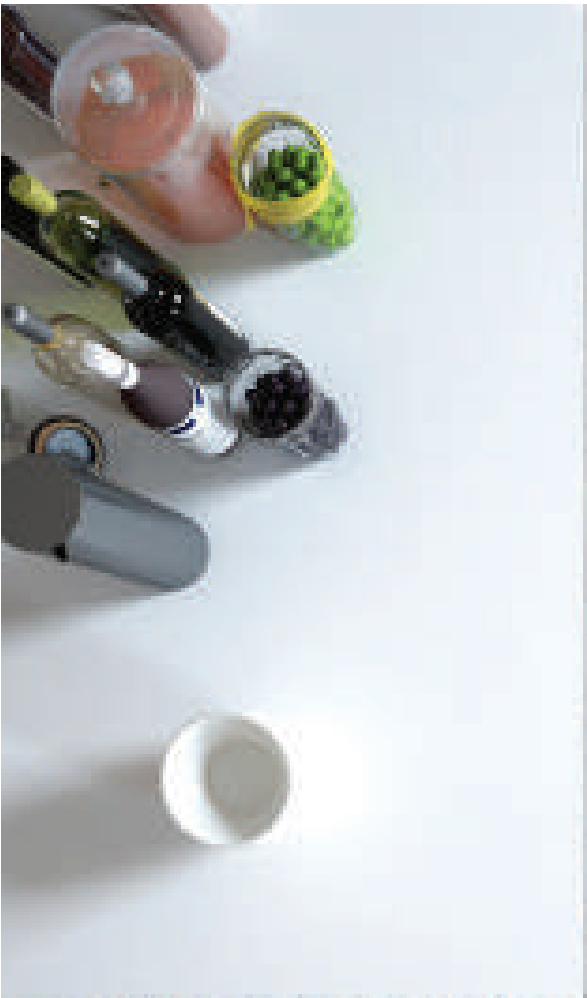
**LIMA DARK**  
EUROPEAN OAK, MARBLE



**LIMA BLACK**  
EUROPEAN OAK, MARBLE

W. 800 mm L. 800 mm T. 20 mm

*Talebe göre özel ölçülerde üretim yapılmaktadır! | Dimensions can change on request!*





**MERVELLA 304**

Reclaimed OAK, Sawn Cut & Stainless Steel

W. 1.000 mm L. 1.000 mm T. 15.5 mm



**MERVELLA 304**

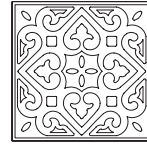
Reclaimed OAK, Sawn Cut & Stainless Steel

W. 1.000 mm L. 1.000 mm T. 15.5 mm

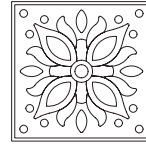


**BASILE 304**

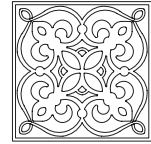
EUROPEAN OAK, Brushed Effect & Stainless Steel



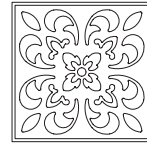
**RUGGERO**



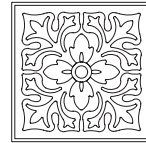
**MONET**



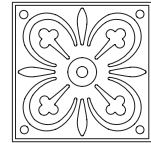
**BASILE**



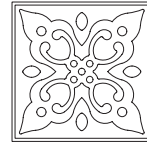
**TETDO**



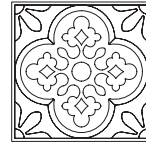
**KLEOPATRA**



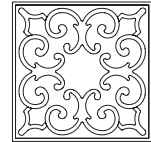
**ODIN**



**ROBERTO**



**PAGANO**



**PAVLO**

W. 600 mm L. 600 mm T. 15.5 mm

*Talebe göre özel ölçülerde üretim yapılmaktadır! / Dimensions can change on request!*



**KLEOPATRA 304**

EUROPEAN OAK, BRUSHED EFFECT & STAINLESS STEEL



**MONET 304**

EUROPEAN OAK, BRUSHED EFFECT & STAINLESS STEEL



**RUGGERO 304**

EUROPEAN OAK, BRUSHED EFFECT & STAINLESS STEEL



**PAGANO 304**

EUROPEAN OAK, BRUSHED EFFECT & STAINLESS STEEL



**ODIN 304**

EUROPEAN OAK, BRUSHED EFFECT & STAINLESS STEEL



**PAVLO 304**

EUROPEAN OAK, BRUSHED EFFECT & STAINLESS STEEL



**ROBERTO 304**

EUROPEAN OAK, BRUSHED EFFECT & STAINLESS STEEL



**TETDO 304**

EUROPEAN OAK, BRUSHED EFFECT & STAINLESS STEEL





# MEDALLIONS & BORDERS

Quality spaces are springs of quality life ...



**MARTINELLI**

WENGE, EUROPEAN OAK, Ø 110 cm



**VITALE**

WENGE, EUROPEAN OAK, Ø 110 cm

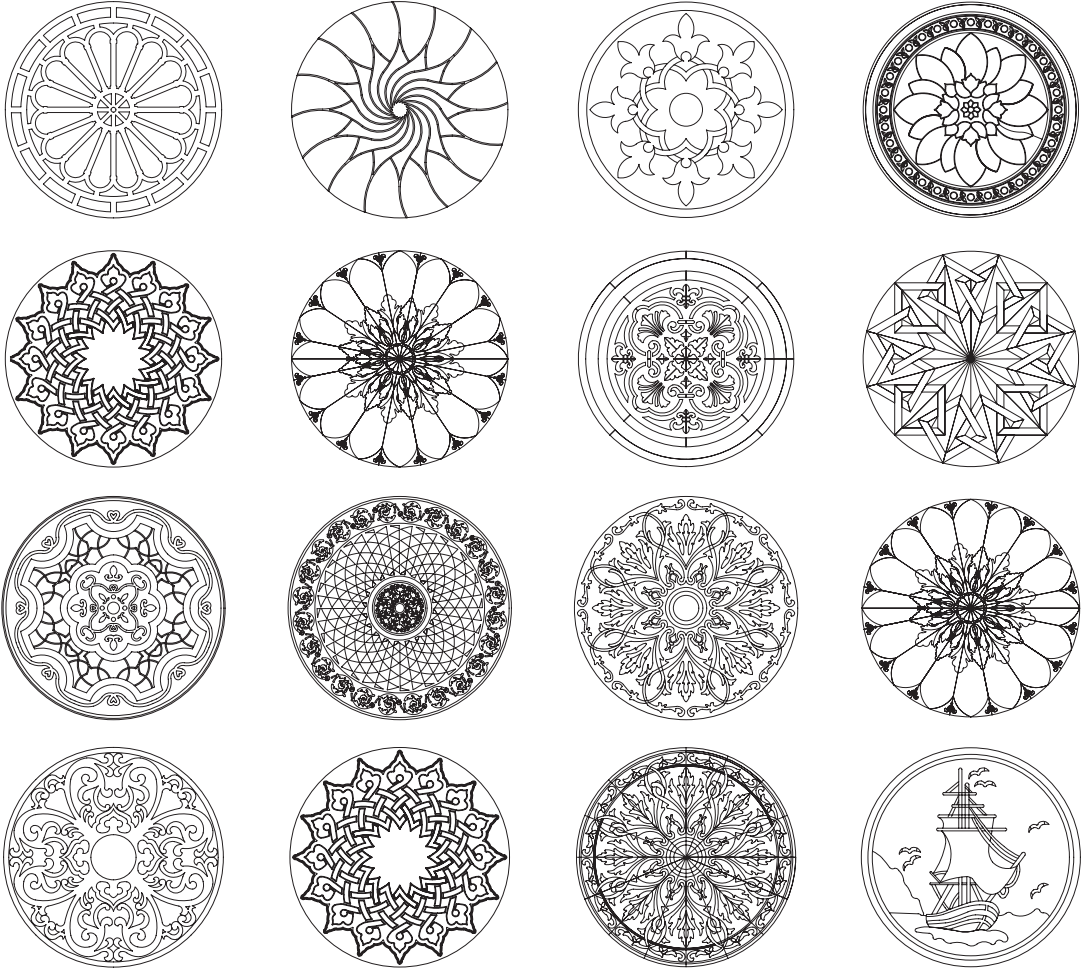


**COPPOLA**

EUROPEAN OAK, CANADIAN MAPLE, Ø 110 cm



# MEDALLIONS



*Talebe göre özel ölçülerde üretim yapılmaktadır! / Dimensions can change on request!*



**ALEMONIA**

MERBAU, WENGE, EUROPEAN OAK, C. MAPLE



**CAMENTA**

A. WALNUT, MERBAU, BILINGA, C. MAPLE, Ø 110 cm



**DUELLONA**

A. WALNUT, E. OAK, C. MAPLE, MERBAU, Ø 110 cm



**CONCUS**

WENGW, IROKO, SAPELLI, E. OAK, Ø 110 cm



**EDUSA**

WENGE, C. MAPLE, A: WALNUT, PADOUK, Ø 110 cm



**ANTEVORTE**

WENGE, E. OAK, C. MAPLE, Ø 110 cm



**AURORA**

A. WALNUT, WENGE, OAK, MAPLE, IROKO, Ø 110 cm



**COPIA**

WENGE, IROKO, E. OAK, C. MAPLE, PADOUK Ø 110 cm IROKO, E. OAK, WENGE, Ø 110 cm



**EGERIA**



**JANUS**

WENGE, E. OAK, IROKO, Ø 110 cm



**LIMA**

A. WALNUT, THMW ASH, ASH NATUREL, Ø 110 cm



**CACA**

AFRORMOSIA, WENGE, C. MAPLE, Ø 110 cm

GRECO



GALLO



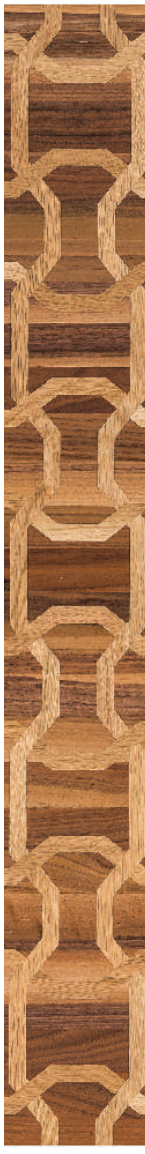
BRUNO



CONTI



MANCINI



COSTA



GIORDANO



RIZZO



LOMBARDI



MORETTI



BARBIERI



FONTANA



MARIANI



CARUSO



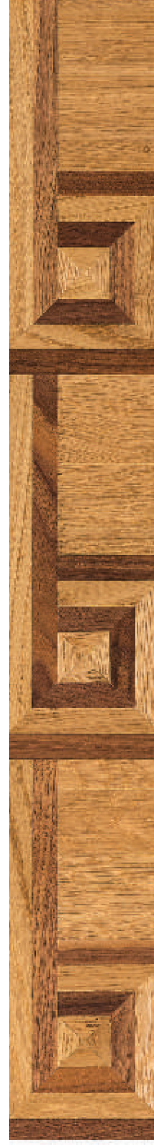
GALLI



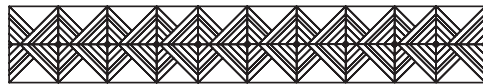
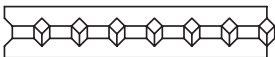
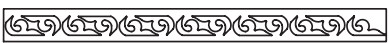
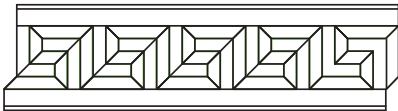
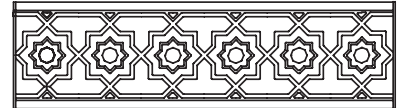
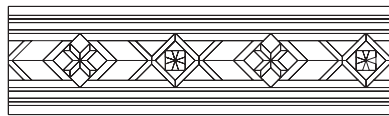
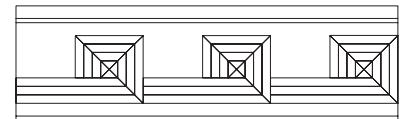
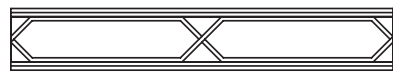
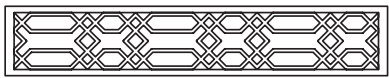
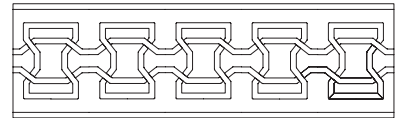
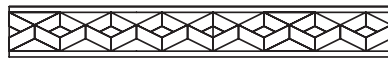
MARTINI



LEONE



# BORDERS





# TABLE ART



# TABLES



**MERVELLA 304**

RECLAIMED OAK & STAINLESS STEEL

W. 1.160 mm

L. 3.000 mm

T. 70 mm

H. 760 mm



**ARES OAK**

RECLAIMED OAK, DEEP BRUSHED

W. 1.000 mm

L. 3.000 mm

T. 70 mm

H. 760 mm



**ANELLO TEAK**

TEAK BURMA  
W. 1.200 mm  
L. 3.000 mm  
T. 70 mm  
H. 760 mm



**THEODEN OAK**

EUROPEAN OAK  
W. 1.200 mm  
L. 3.000 mm  
T. 70 mm  
H. 760 mm



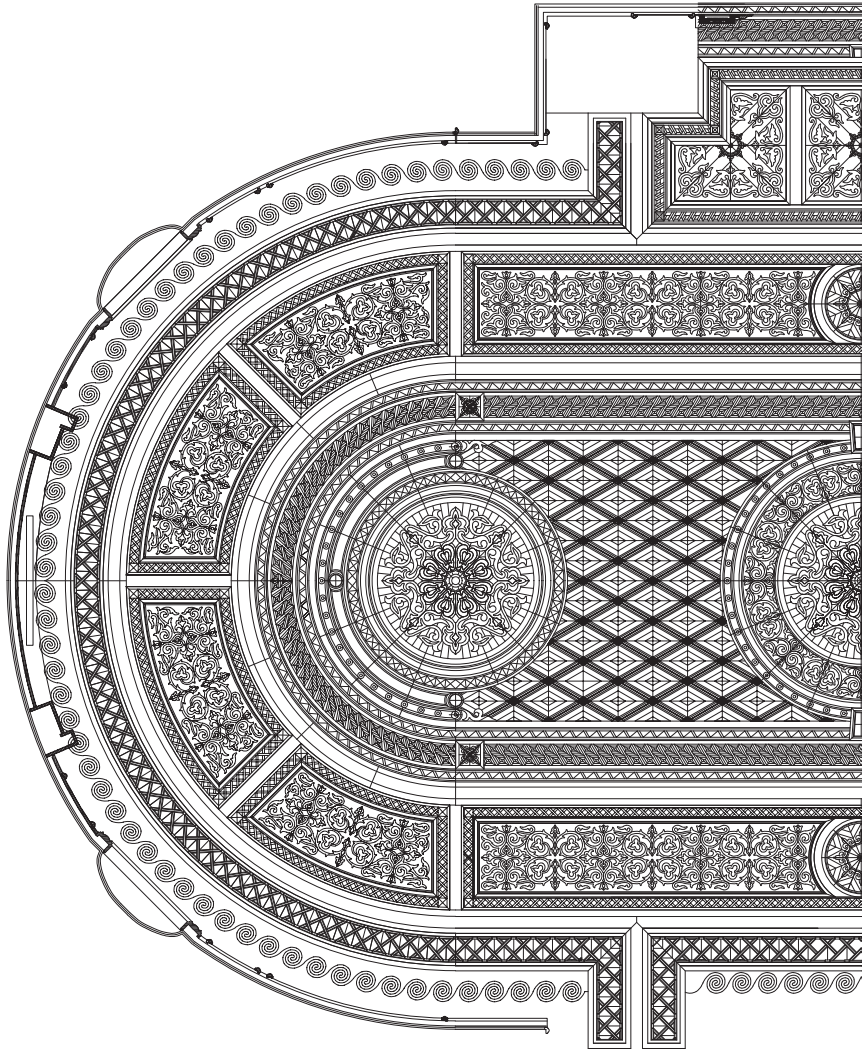
**ANELLO OAK**

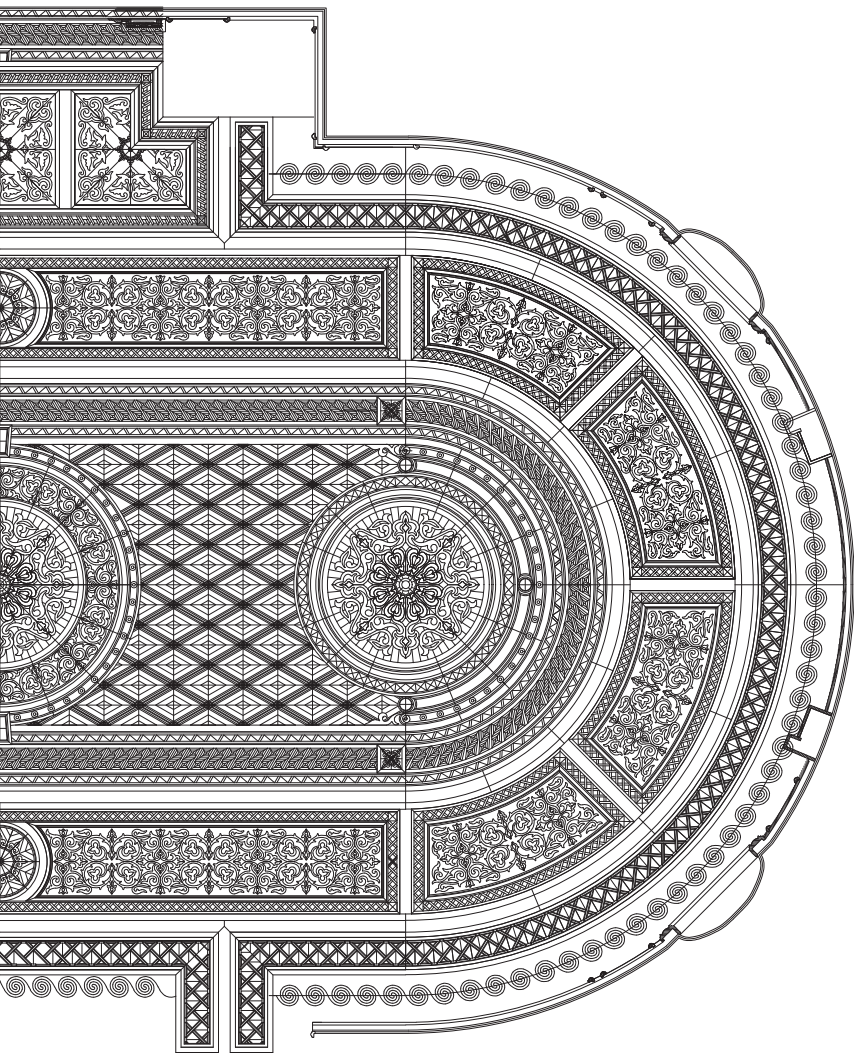
RECLAIMED OAK & STAINLESS STEEL  
W. 1.200 mm  
L. 3.000 mm  
T. 70 mm  
H. 760 mm

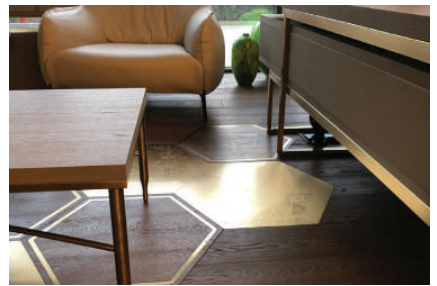


Retro Flooring quality is not only prestigious,  
but also privileged and practical.

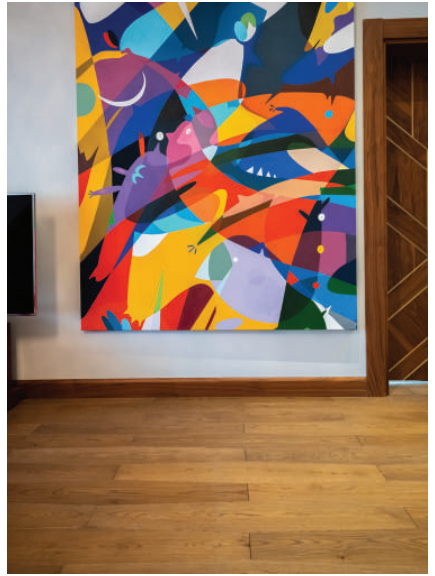
# PROJECTS





















DESARC DESIGN CORPORATE  
Desarc Dış Ticaret ve Danışmanlık Ltd. Şti.  
Adalet Mah. Manas Blv. No: 47B  
Folkart Towers, A-Block, St #: 3406  
Bayraklı, İzmir 35530 TURKEY  
Tax ID : Karşıyaka V.D. 293 091 4956

Head Office : Adalet Mah. Manas Blv. No: 47B Folkart Towers, A-Block, St # : 3406 Bayraklı, İzmir 35530 TURKEY  
Phone : +90 232 570 01 20  
desarc@desarcdesign.com

Afyon Factory : Afyon O.S.B. 1. Cad. 10. Sok. N#: 5 Afyon, 03030 TURKEY

Istanbul Factory : Istanbul Anadolu Yakası O.S.B. 1. Sok. N#: 2, Tuzla 34953 Istanbul / TURKEY

Marquetry Factory : Bahçelievler Mah. Hasanoğlan S.B. N#: 8 Mamak 06852 Ankara / TURKEY